

W. H. Young  
F. Yale Adams } to E. R. Young  
Ella I. Mitchell

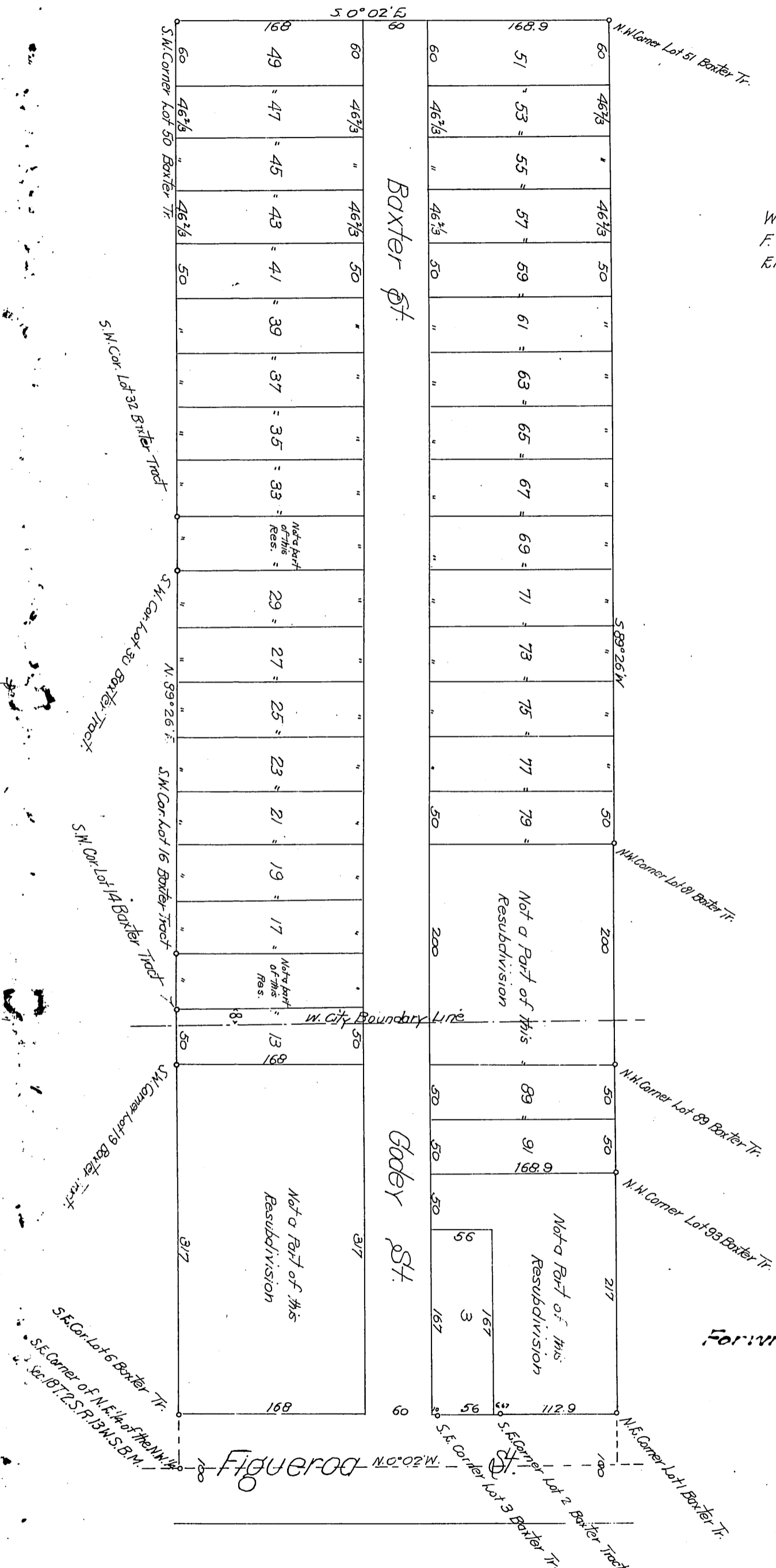
Being a Resubdivision of part of the Baxter Tract as recorded in Book 37 Page 32 and Book 107 Pages 50-51 Miscellaneous Records of Los Angeles County Cal. Surveyed Nov. 1901 by V. I. Rowan.

Map of the

### Young & Adams Tract

Scale 100 feet to inch.

For Hoover St see C.C. Map No 795  
For widening Hoover St See C.F. 882. D: 20-266.



Recorded Oct. 4, 1905

STRAVON  
M34-73

A. 201

Sh. 24-7

Prof. B. W. H.

D: 2423