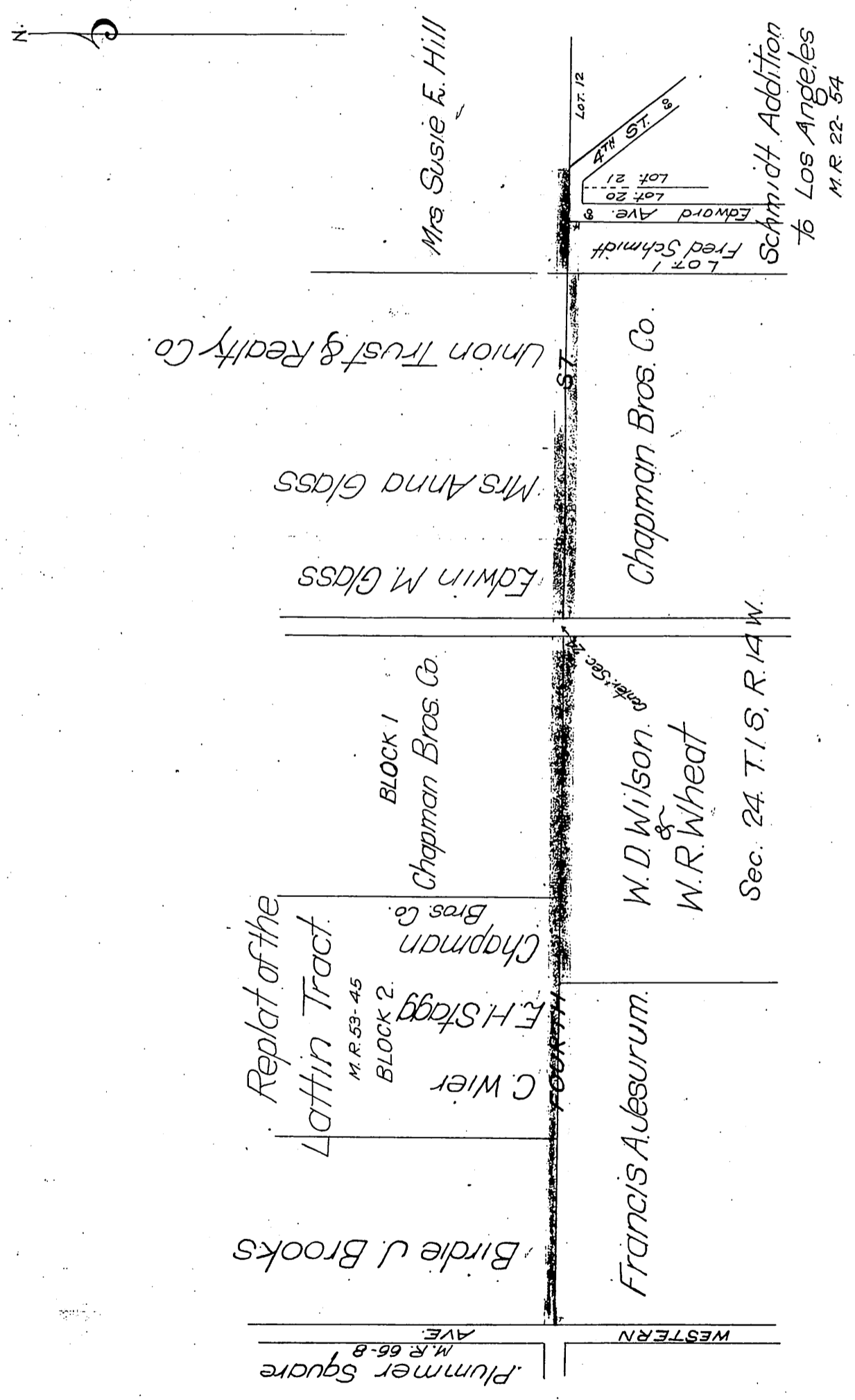


DM 2429-31

89.

- Chapman Bros Co.
- F.M. Chapman Pr
- S.Y. Chapman Sec.
- Edwin M. Glass
- Anna M. Glass
- F.H. Brooks
- Birdie J. Brooks
- Mrs. Susie E. Hill
- Wilson & Wheat.
- E. H. Stagg.
- Chas Wier
- W. D. Wilson
- W. R. Wheat.

to County of Los Angeles.



Recorded Aug. 24, 1905

5/1/05 11.34

comp
H.C.