

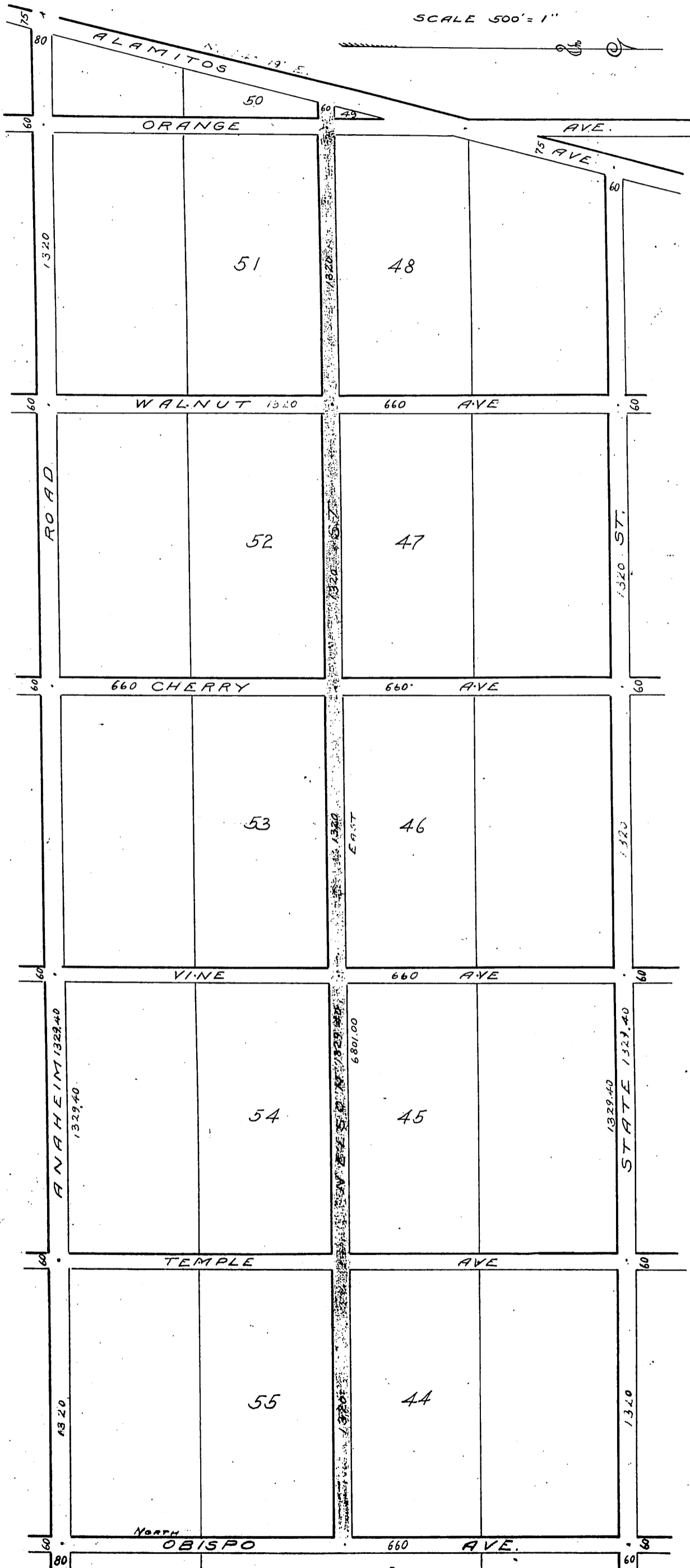
DM 2447-219

6

6

Alamitos Land Co.
Jotham Bixby Vice-Pres.
Geo. C. Flint Secy
Frederick Safford
by Henry C. Dillon his attorney in fact
J. B. Ellmore
Lanoh Ellmore

to City of Los Angeles.



SHOWING LOCATION OF A 60 FT STREET OR PUBLIC ROAD RUNNING EAST FROM ALAMITOS AVENUE TO OBISPO AVENUE IN THE ALAMITOS TRACT LOS ANGELES COUNTY CAL.

PLAT

See II:3-240

Recorded Nov. 3 1905