

133C

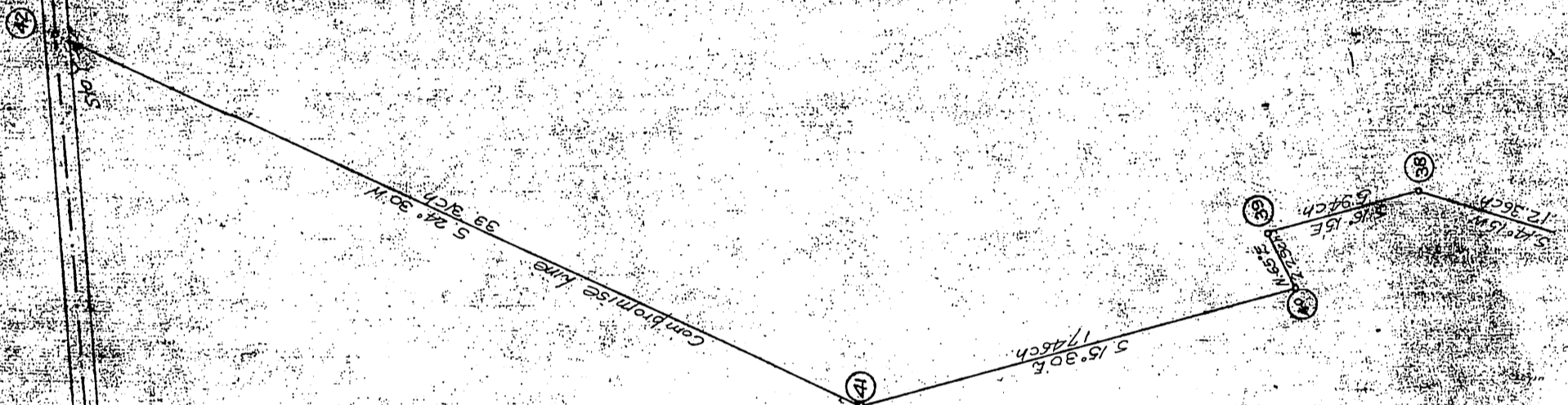
Agreement -  
Seaside Water Co.  
to  
S.P.N.A. & S.L.R.R. Co.

DM 2470-44

26

USGS North

Exhibit A



WILMINGTON & ANAHEIM ROAD

S.P.N.A. & S.L.R.R.

Map showing Compromise line between Rancho Los Cerritos & San Pedro at the Mouth of the San Gabriel River and lands transferred and quit claimed between the Seaside Water Co and the San Pedro Los Angeles and Salt Lake R.R.Co.

July 11, 1905  
Approved E. M. Jessup, E. M. of W.  
Scale 1" = 400 ft.