

90

2514

1786

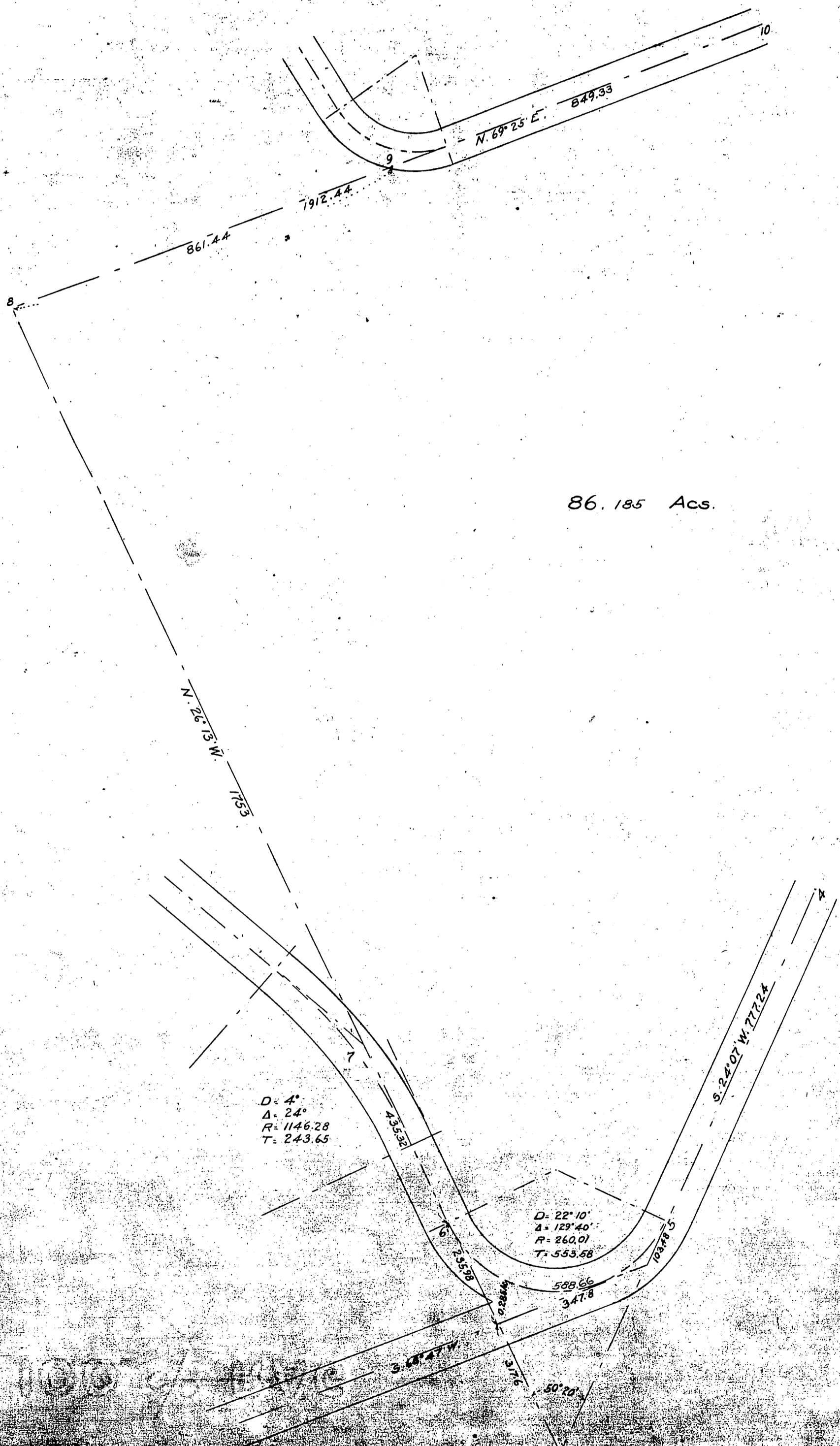
DM 2517-90

50

E. J. Baldwin

to

President of Board of Trustees of Saint Vincents College



86.185 Acs.

$D = 4'$
 $\Delta = 24'$
 $R = 1146.28$
 $T = 243.65$

$D = 22' 10''$
 $\Delta = 129' 40''$
 $R = 260.01$
 $T = 553.58$