

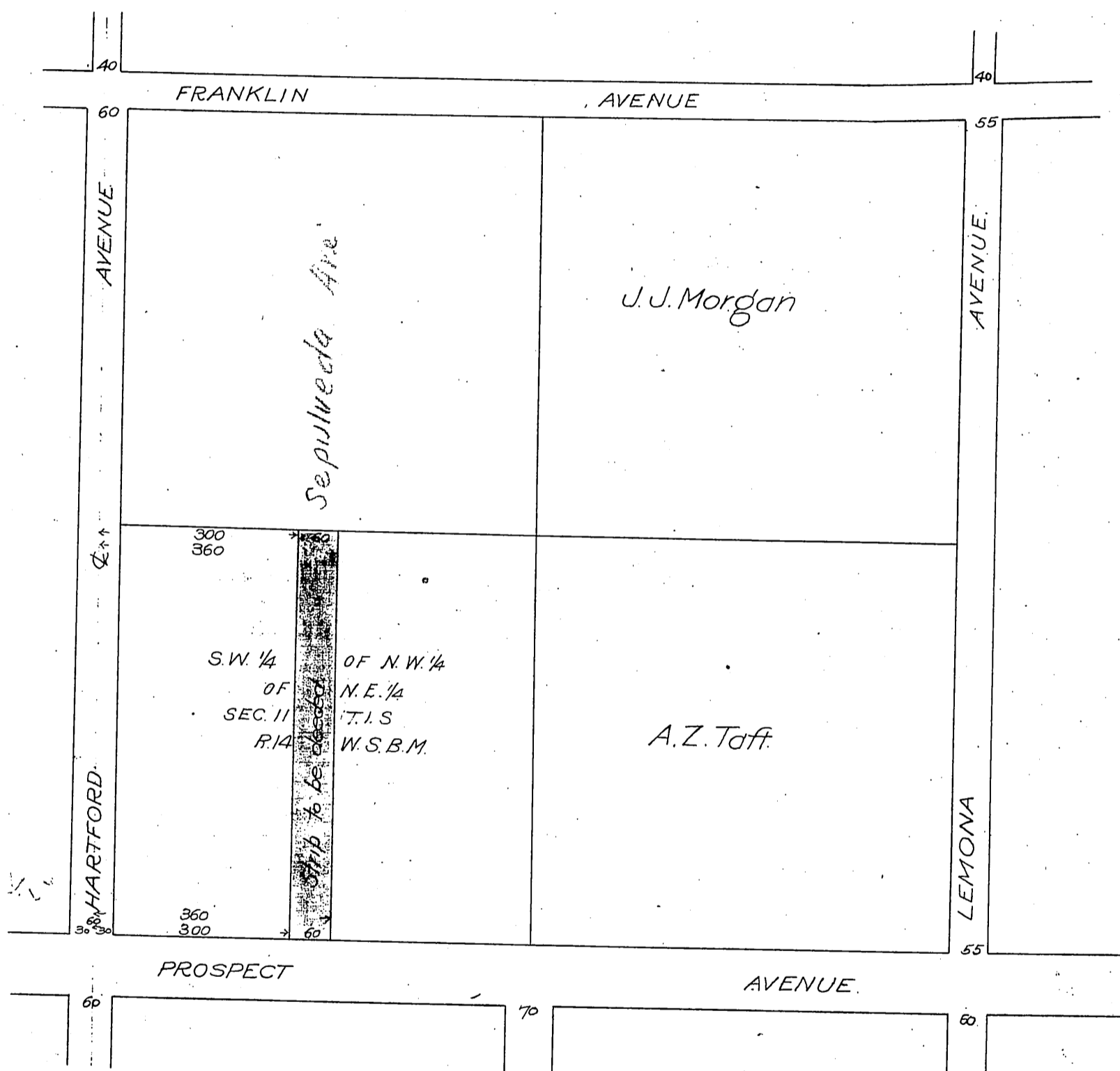
Gertrude Taft
Abbie Taft Earle
- to -
City of Hollywood.

DM 2521-9

57

57

MAP
Showing the dedication of a strip of land 60 ft. wide for Street purposes in
S.W. 1/4 of N.W. 1/4 of N.E. 1/4 of Sec. 11, T.1.S. R. 14, W.5.B.M. for Street purposes -
Gertrude Taft & Abbie Taft Earle
City of Hollywood
Oct. 20, 1905
City Engineers Office
Scale 200' = 1"
K. U. R.



Recorded Nov. 2, 1905

788 10-95 548

D:2521