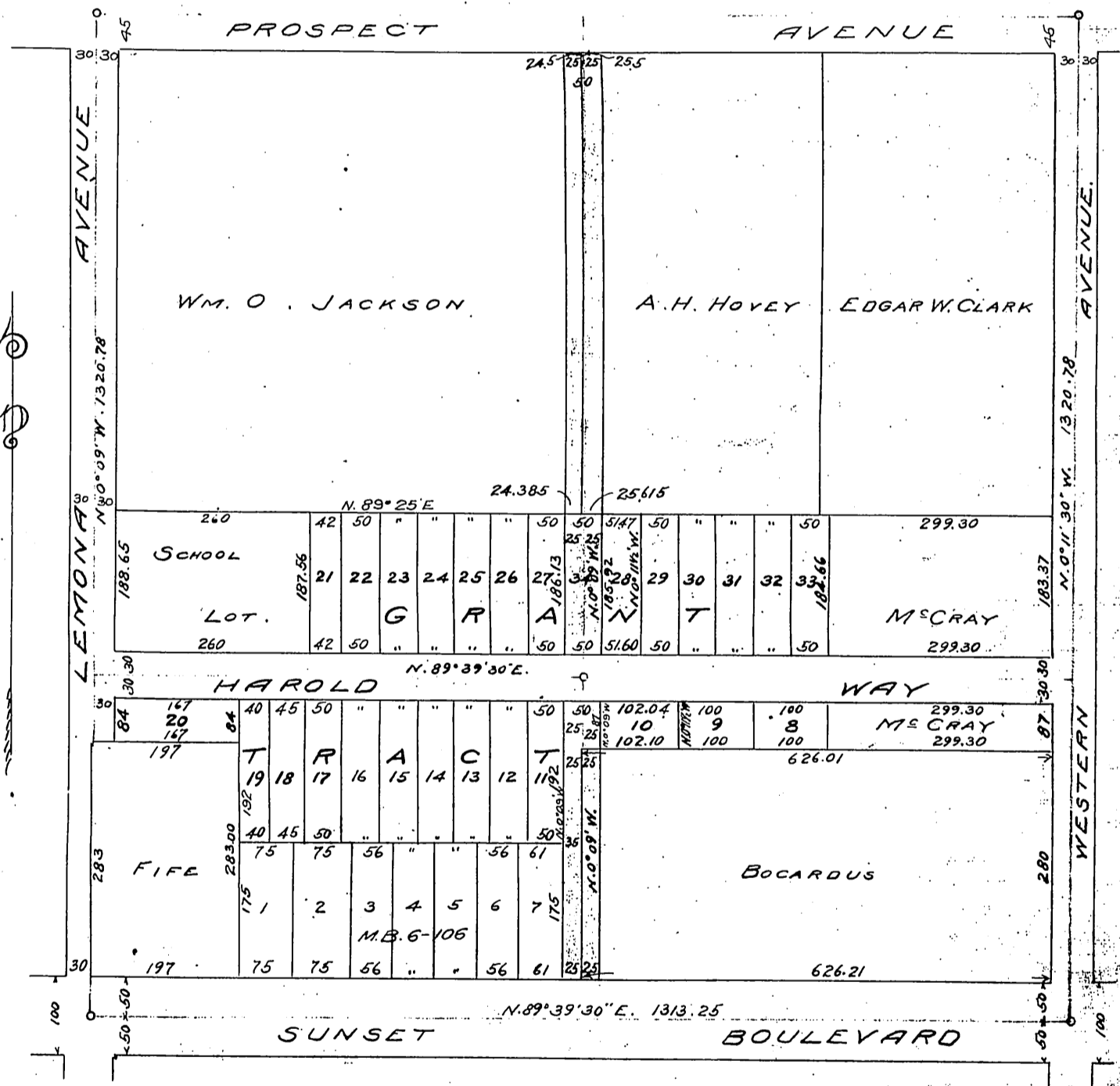


SS
H. 88 1/2
Hollywood

Title Insurance and Trust Company
W. A. Dunning
W. O. Jackson
E. F. Bogardus
A. H. Hoyer.
to
City of Hollywood

MAP
Showing the dedication of a 300' strip of
land from the North line of Sunset Bou-
levard to S. line of Prospect Avenue in
lots & Lick Tract M.R. 7-92 9-16-1905
City Engineer Office Hollywood. Scale 200' = 1"



See I:6-98

Recorded Dec. 28 1905