

DM 2549-49

39

39

49

W. H. B. Kilner
 John A. Aldritt
 Jeannette M. Campbell
 E. Luke
 Arthur L. Adams
 Frank Mortimer
 Nellie Mortimer

to County of Los Angeles.

From Center Line (4" Gas Pipe) of Center Street 995.62 ft. to
 N. 89° 53 1/2' E

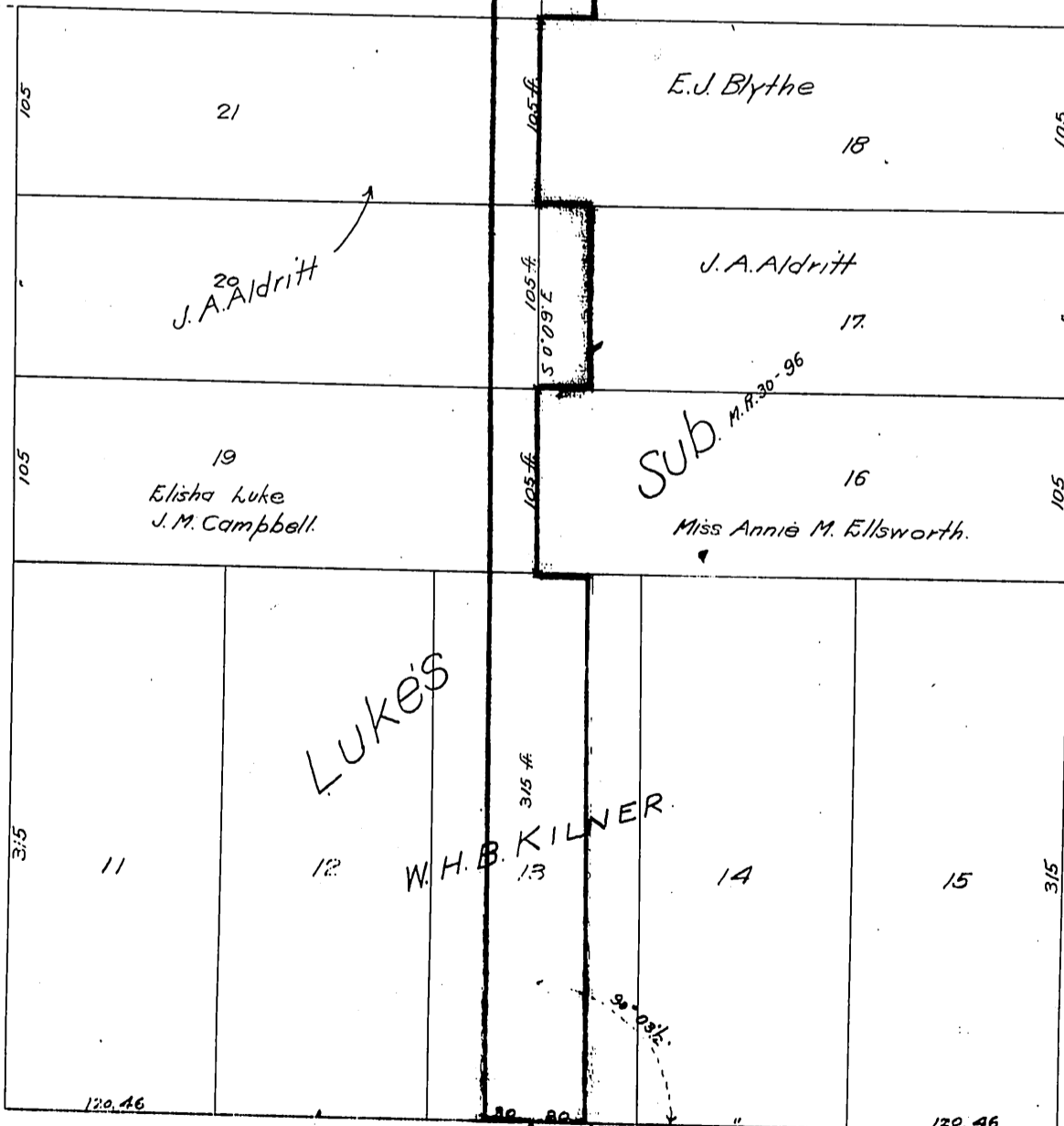
FRANKLIN AVE.

W. 1/2 of E. 1/2 of Lot No. 25 Lick Tract (M.R. 7-92)
 J. A. Aldritt

E. 1/2 of E. 1/2 of Lot No. 25 Lick Tr. (M.R. 7-92.)
 Frank Mortimer

HOLMBY AVE.

ST.



From Center Line (4" Gas Pipe) of Center Street 994.765 ft. to
 N. 89° 54 1/2' E

PROSPECT AVE.

Recorded Dec. 23, 1905

Sh. 8

Cont. Ed. H.