

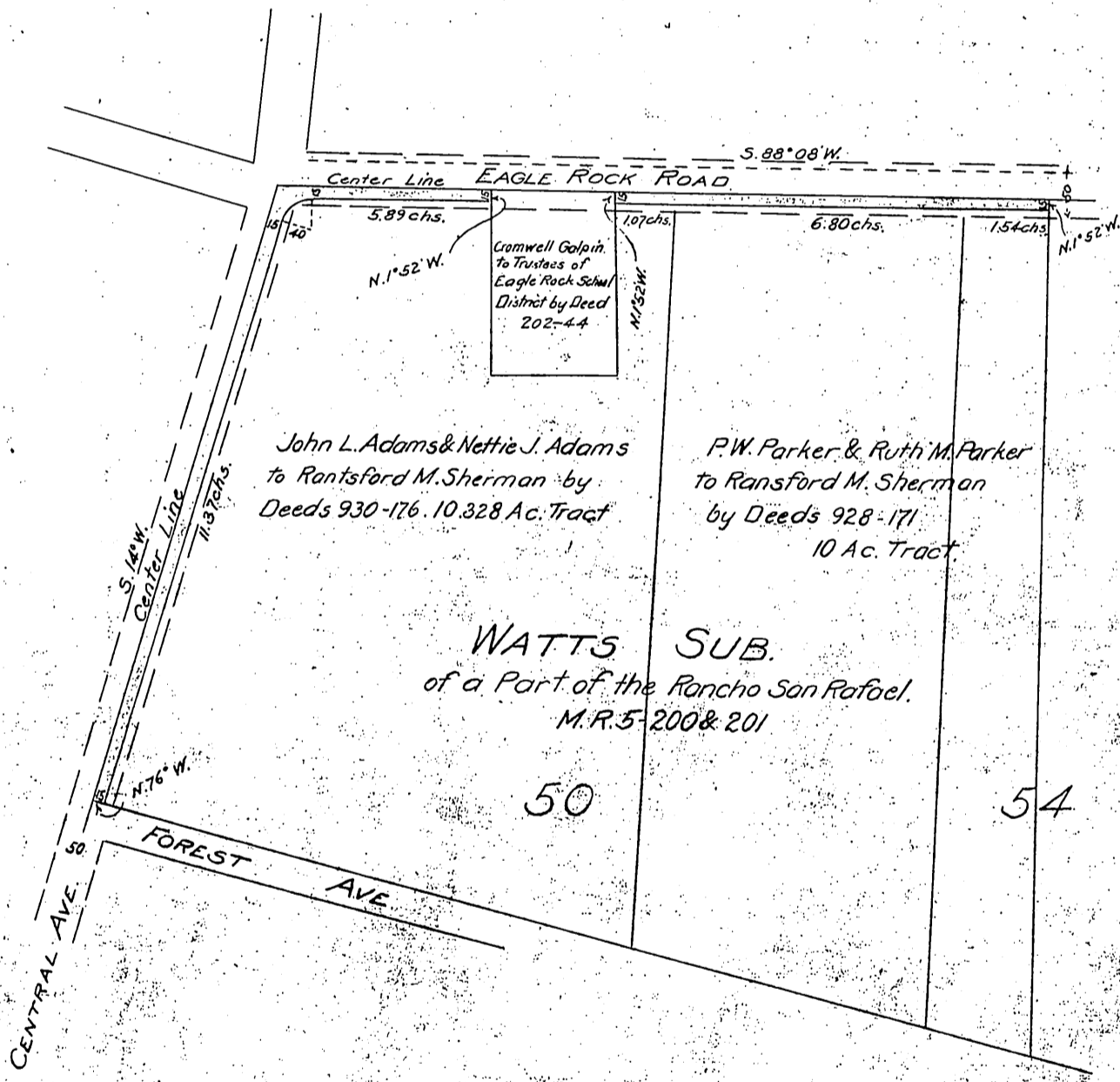
DM 2578-25

25

2

2

Ransford M. Sherman
Sarah M. Sherman
to
Los Angeles Land Company



John L. Adams & Nettie J. Adams
to Ransford M. Sherman by
Deeds 930-176, 10, 328 Ac. Tract

P.W. Parker & Ruth M. Parker
to Ransford M. Sherman
by Deeds 928-171
10 Ac. Tract

WATTS SUB.
of a Part of the Rancho San Rafael.
M.R. 5-200 & 201

50

54

Scale 200' = 1"

Recorded Jan. 26, 1906