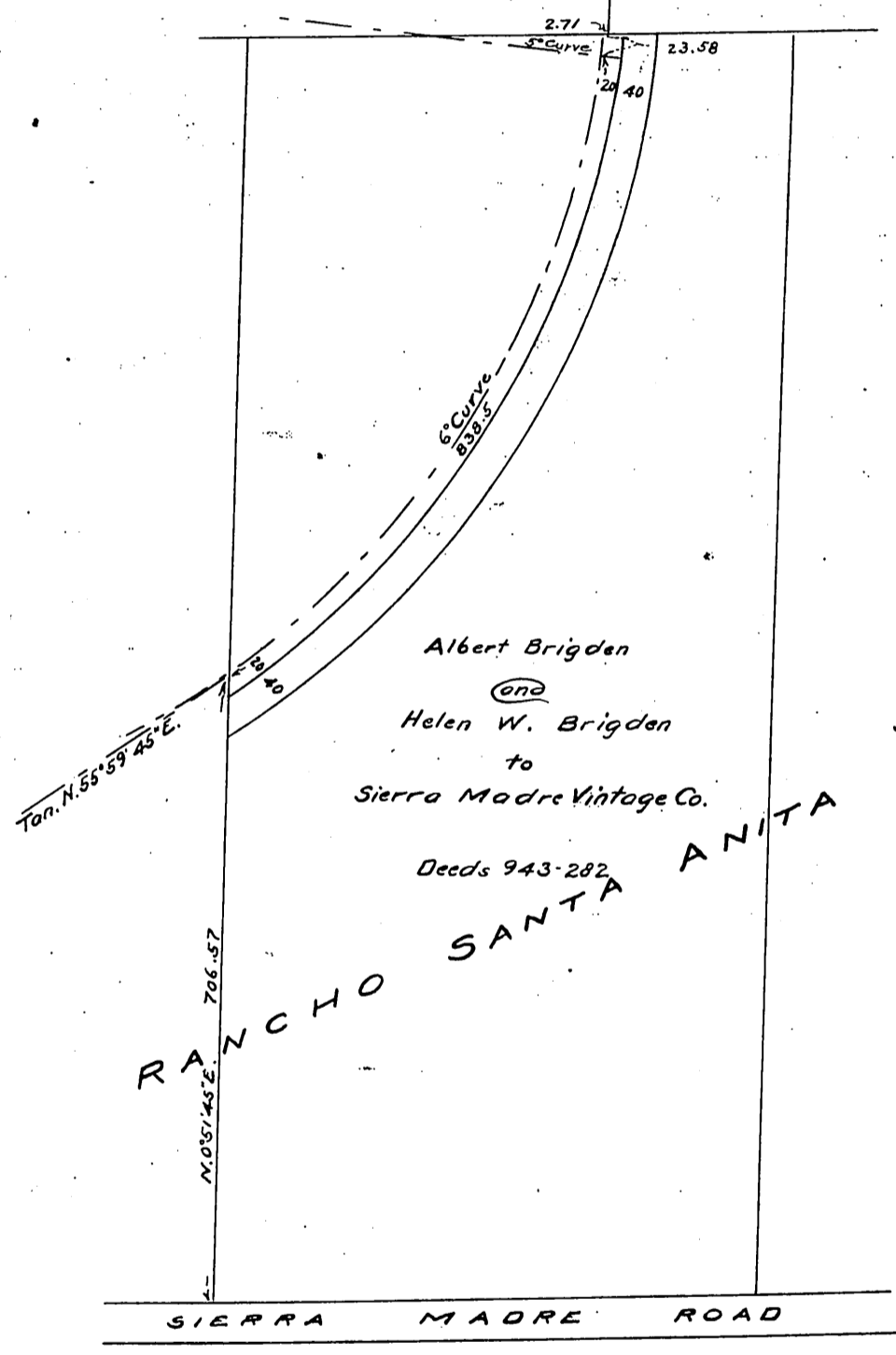


DM 2580-67

7

Sierra Madre Vintage Company  
to  
County of Los Angeles

LOT N<sup>o</sup> 2 BLOCK A  
BONESTELL TRACT  
M. R. 4 - 572



Albert Brigden  
(and)  
Helen W. Brigden  
to  
Sierra Madre Vintage Co.

Deeds 943-282

RANCHO SANTA ANITA

SCALE 1" = 200'

Recorded Feb. 7 1906

A. G. S.

Sub 173-202

D. 2580