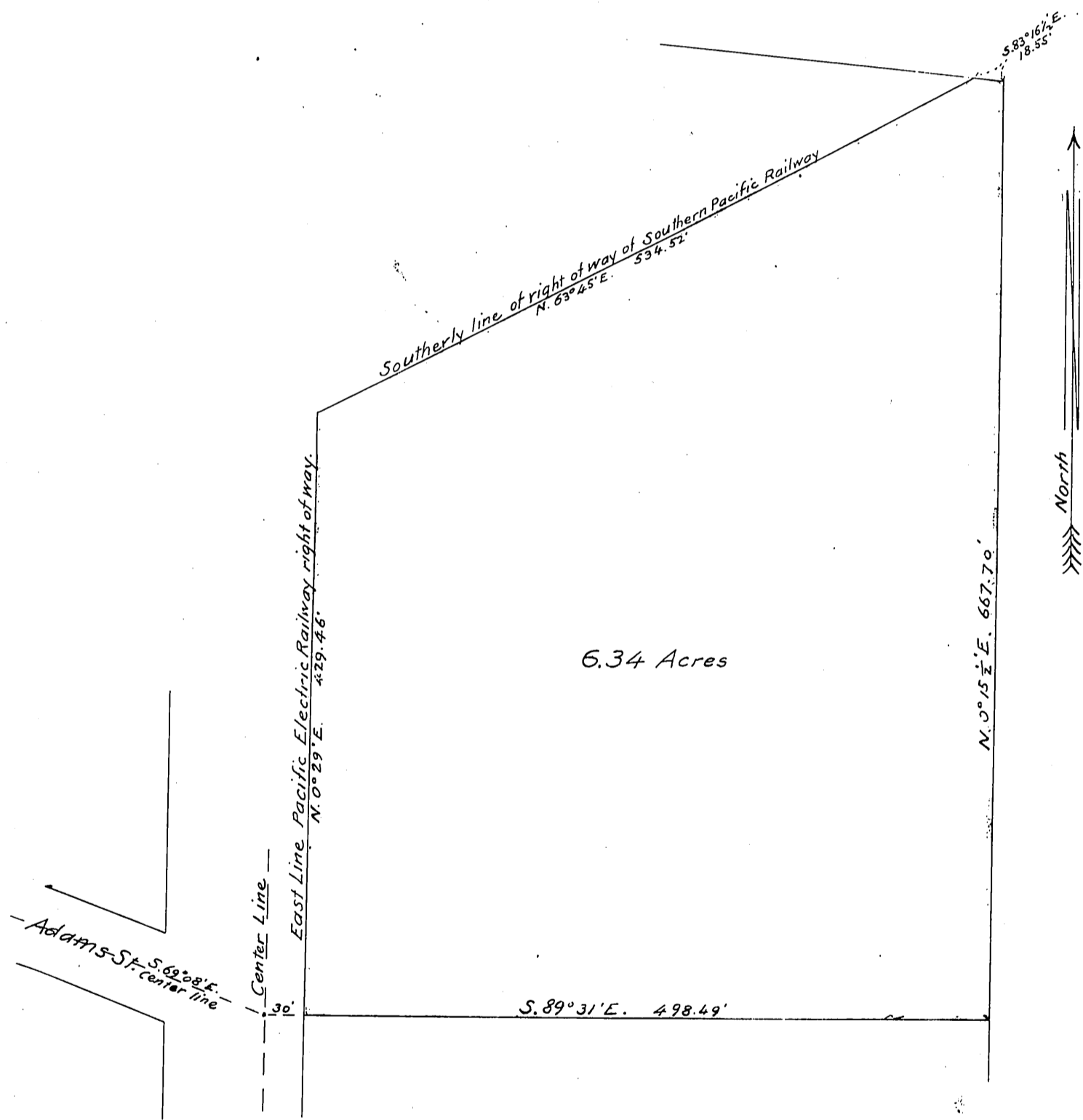


Title Insurance and Trust Company
to
American Olive Company.

Map of a portion
of the tract known as the
Garibaldi land in the
City of Los Angeles, California -

Scale 100 feet to one inch

True Courses.



Recorded Mar. 27, 1906

SHIT CR. See M 34-132

H 1111

Handwritten signature or initials in the bottom right corner.