

DM 2635-201-202

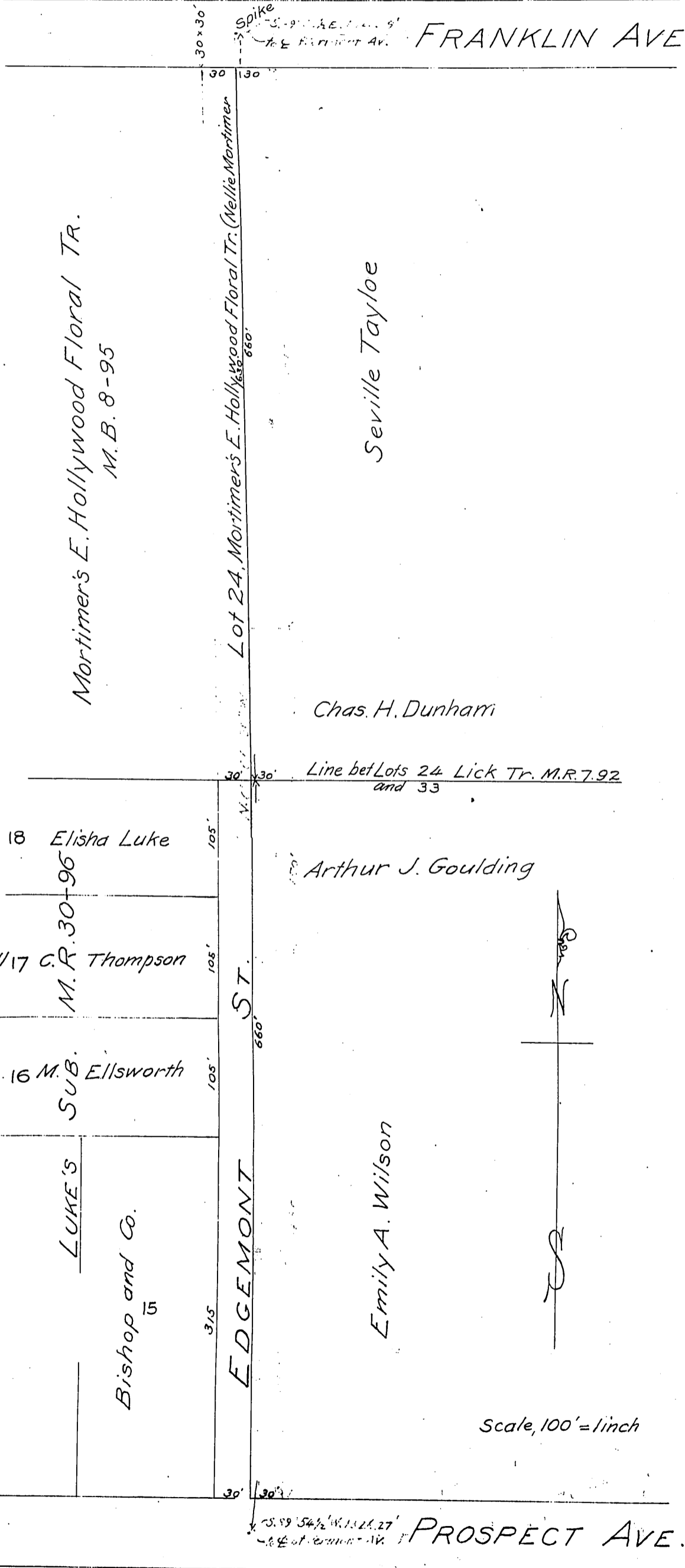
201-202

66

Nellie Mortimer
Diamond Realty Company
Arthur John Goulding
Seville Tayloe
Carrie E. Durham
Emily A. Wilson

66

to County of Los Angeles



Scale, 100' = 1 inch

307 1-3-200

Recorded Mar. 22, 1906

A 78