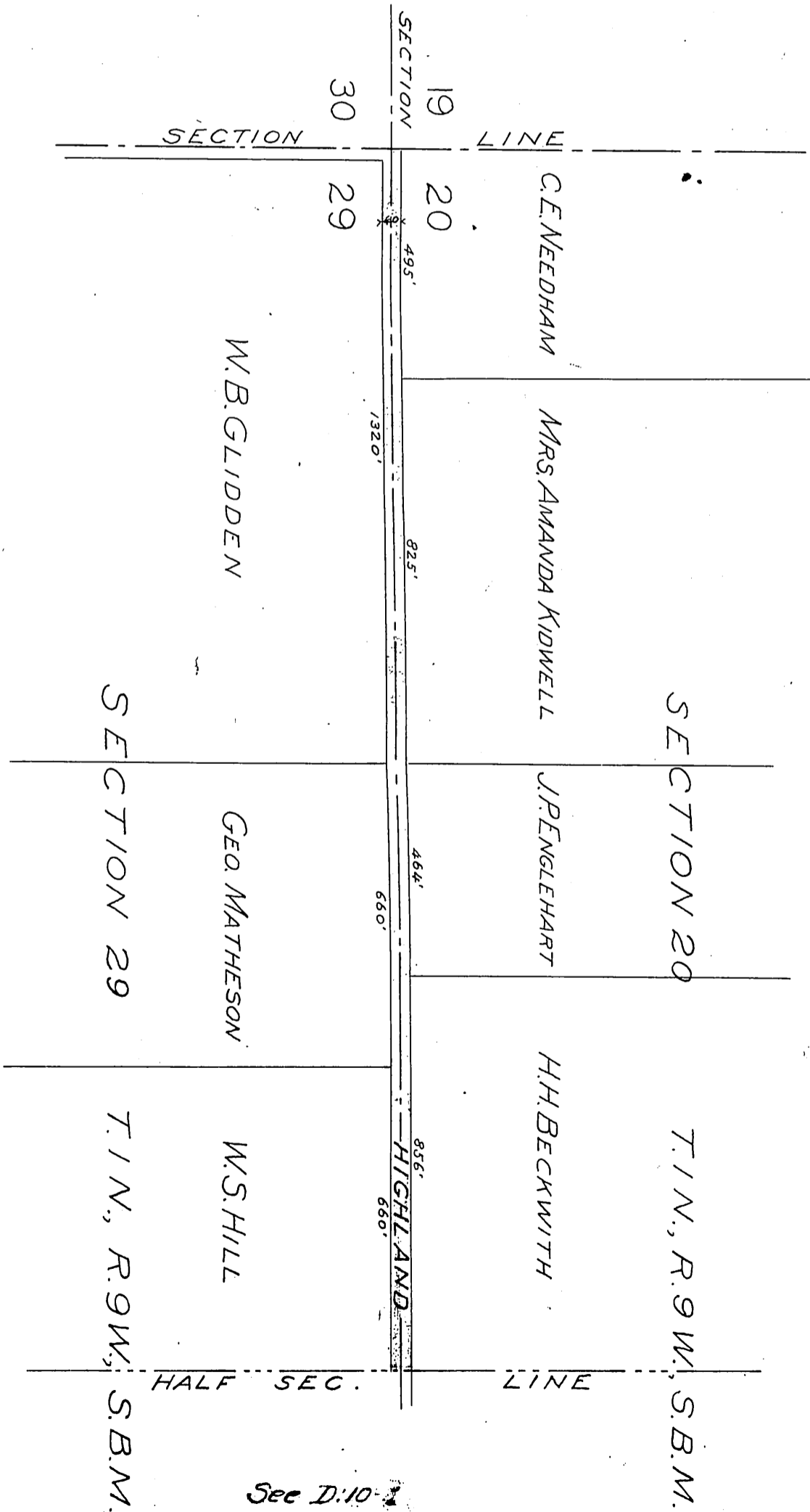


W. B. Glidden
 C. E. Needham
 H. H. Beckwith
 K. Beckwith
 Rose H. Englehart
 George Matheson
 William S. Hill
 A. E. Bell
 H. K. Miller

} to County of Los Angeles



Map
 SHOWING DEDICATION OF 40 FT. ROAD
 AS PER DEED ATTACHED.
 J.H. McClymonds, Jr., C.E. Monrovia, California

Scale: 1 in. = 300 ft.

See D:10-1

SPECIAL