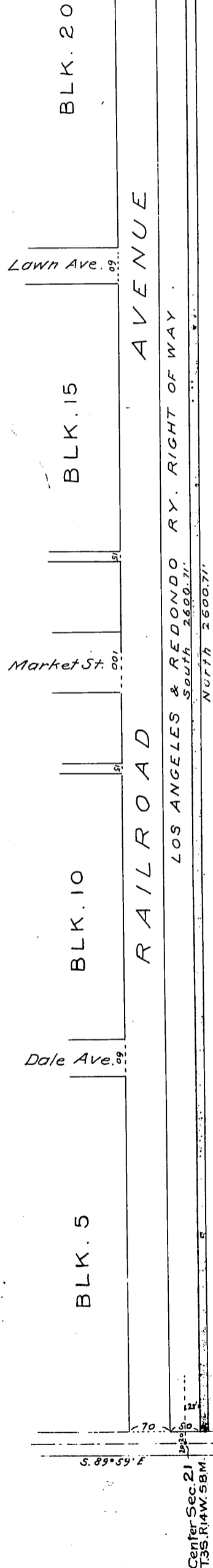


E.S. Hopper and Son  
C.C. Hunt  
Philinda Hunt  
A.H. MacFarland

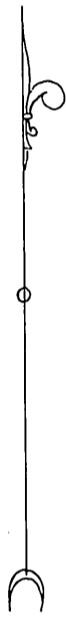
to Los Angeles and Redondo Railway Company.

N. 89° 59' W.  
ROSECRANS AVE.  
S. 89° 59' E.

Original N.W. Cor of Lot 5 in Sec. 21 T. 3 S. R. 14 W. S. B. M.  
as shown on the partition map of property formerly the Redondo Land Co.



LAWNDALE TRACT  
MAPS, 9-122



W 1/2 OF NE 1/4 SEC. 21, T. 3 S., R. 14 W., S. B. M.

See 17:35-130

Recorded May 23, 1906

Sht. O.K