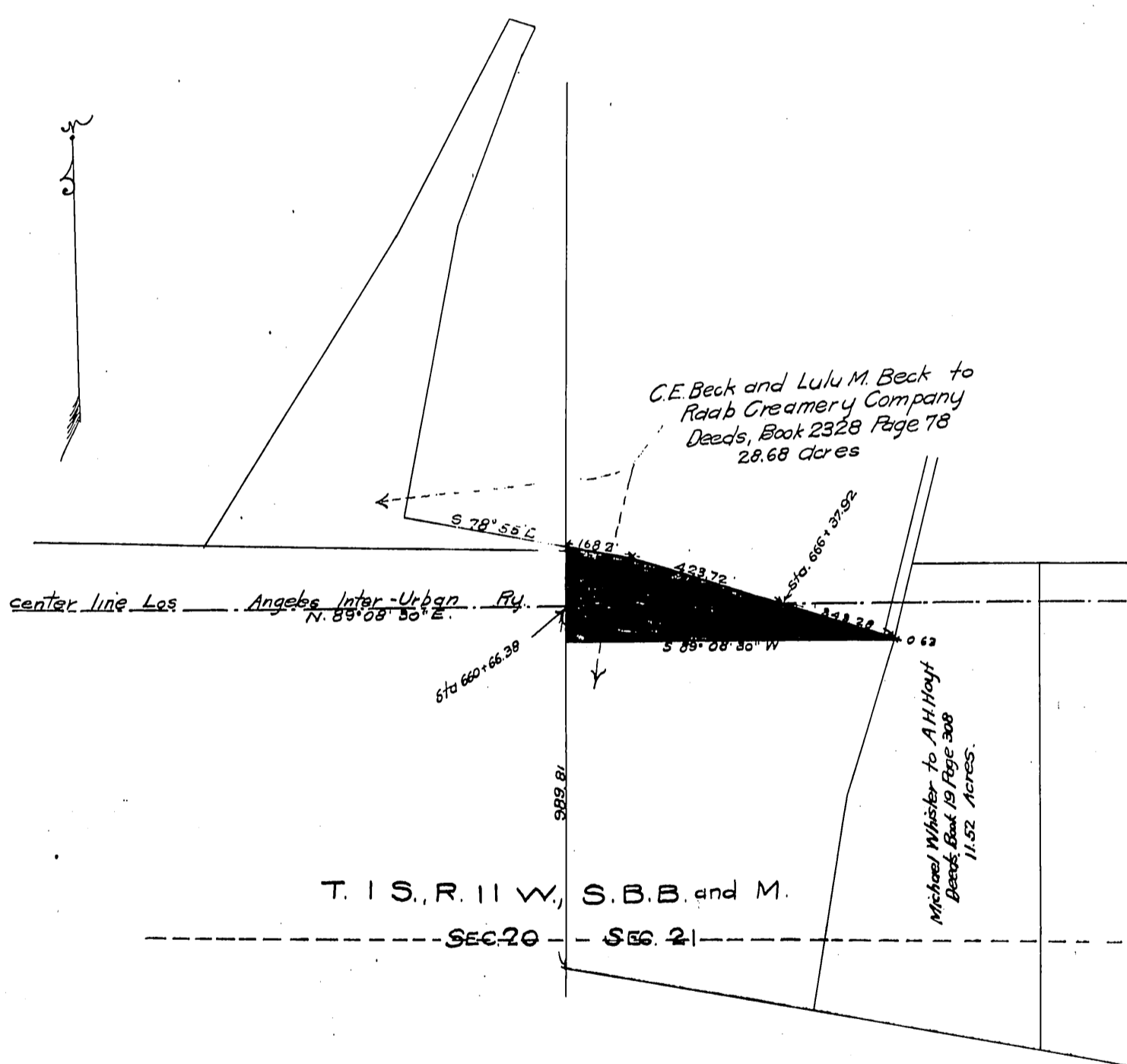


DM 2656-20

10

10

Raab Creamery Co.  
-to-  
Los Angeles Inter-Urban Ry. Co.



Total area colored red = 2.83 Acres.  
Area of 80 ft. strip indicated by dotted lines = 1.05 "

Scale 1 Inch = 400 Feet

Recorded Apr. 6. 1906.

Book No. 110-108  
Pg 115

combs  
D:265