

DM 2659-204

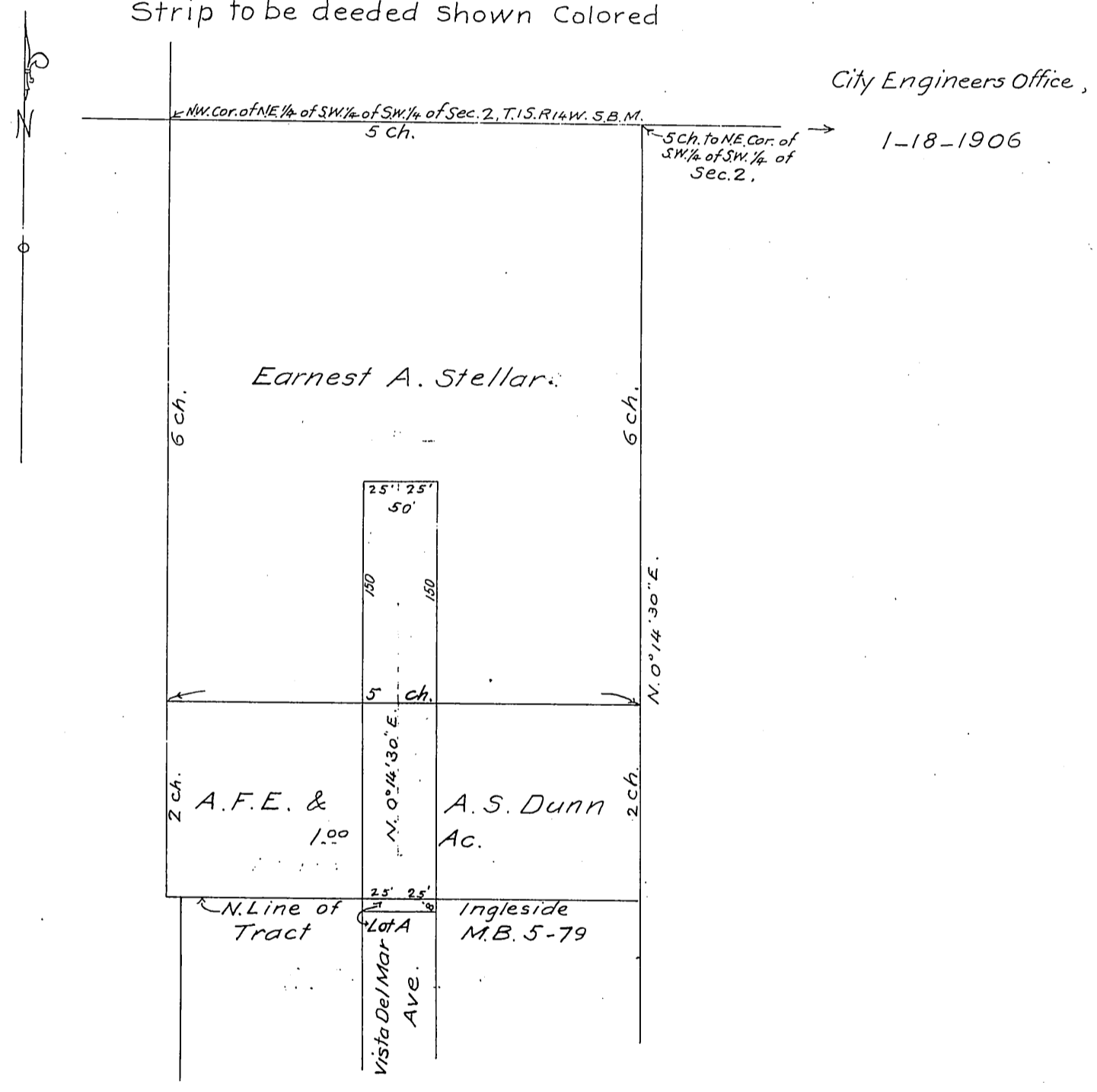
15

A.S. Dunn
 A.F.E. Dunn
 E.A. Stellar
 Nettie Holloway Stellar
 Edmund D. Sturdevant
 Eunice I. Sturdevant

} to City of Hollywood
 California

Map showing Vista Del Mar Avenue
 extended 282' N. of North line of Ingleside Tract, M.B. 5-79
 City of Hollywood.
 Scale: 100 ft. to 1 in. -

Strip to be deeded shown Colored



Recorded May 8, 1906

Sec 170-99 A, 50 1/2 N. 1/4