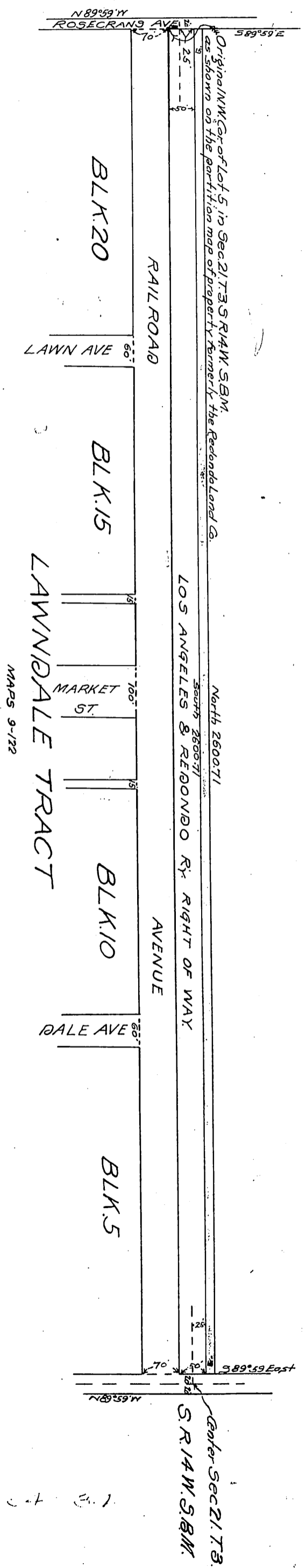


DM 2709-215

77

E.L. Hopper & Son
to
Los Angeles & Redondo Ry Co.

Scale 100' = 1"
(Scale reduced to 200' = 1")



W 1/2 of NE 1/4 Sec 21 T. 3 S. R. 14 W. S. B.M.

130' N. 1/2 Sec 21 T. 3 S. R. 14 W. S. B.M.

MAPS 9-122

Recorded July 11, 1906

Handwritten initials and notes at the bottom right corner.