

DM 2741-35

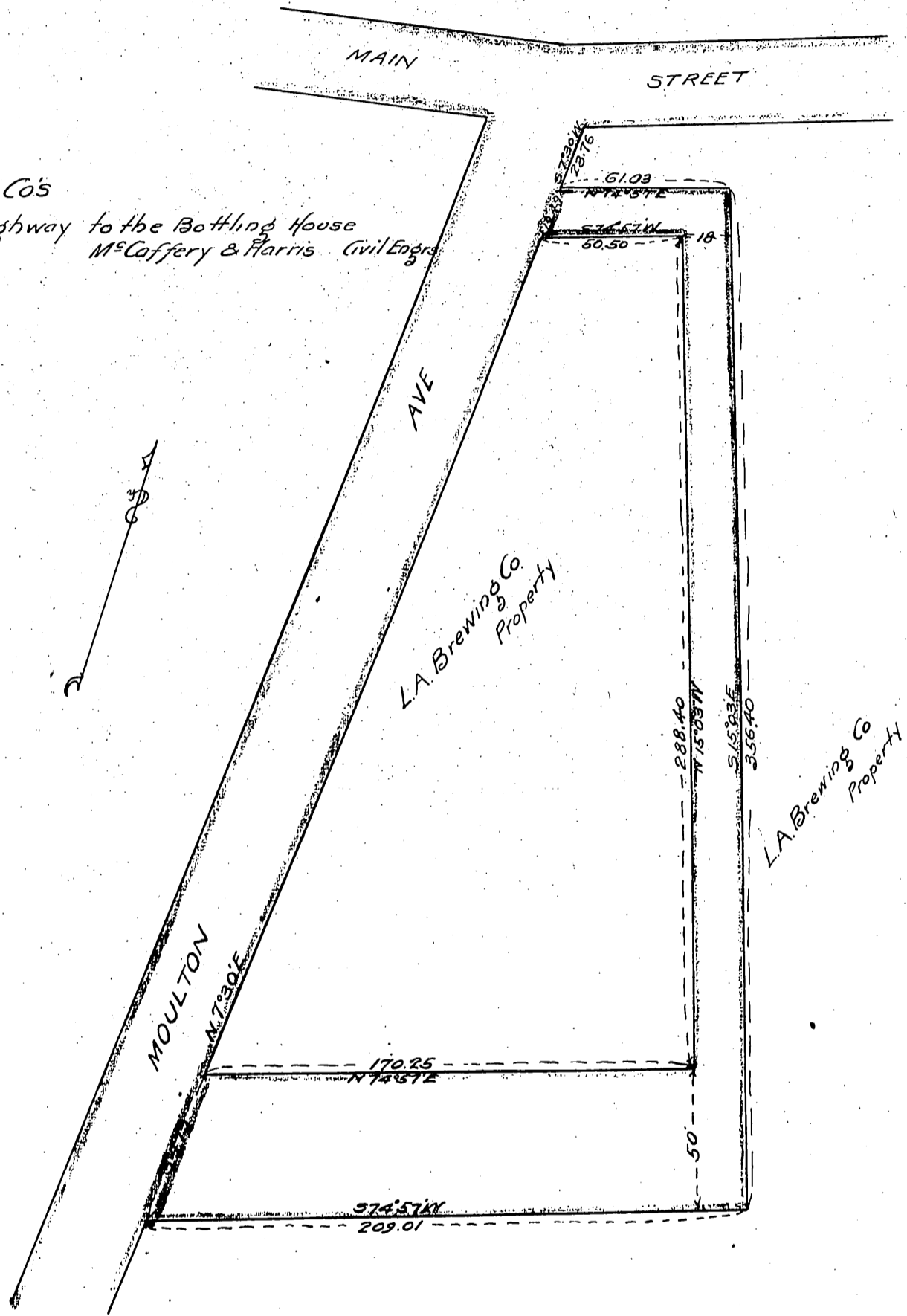
35

35
7

Los Angeles Brewing Co
to
City of Los Angeles

L.A. Brewing Co's

New highway to the Bottling House
McCaffery & Harris Civil Engrs



Kramer Ave. (por. colored blue) vacated. - Ord. 73423.

Recorded June 26, 1906.

Doc. 11 7-253 11/18 17

102741