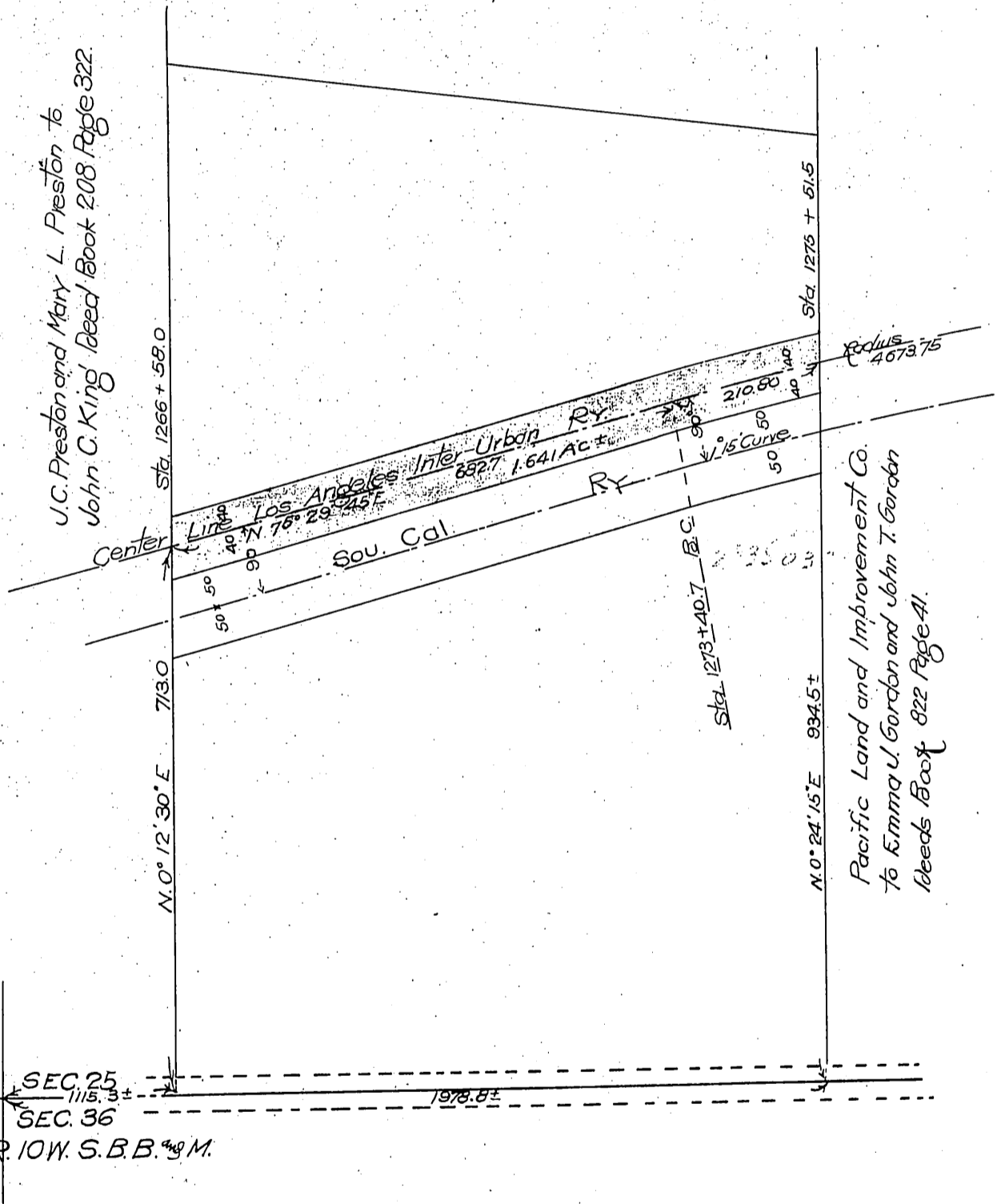


James C. Preston
-to-
Los Angeles Inter Urban Ry. Co.

Scale 1"=200'



J.C. Preston and Mary L. Preston to
John C. King Deed Book 208 Page 322.



Pacific Land and Improvement Co.
to Emma U. Gordon and John T. Gordon
Deeds Book 822 Page 41.

Recorded Aug. 6, 1906.

A 106

Cal. E. & A.

D: 2773