

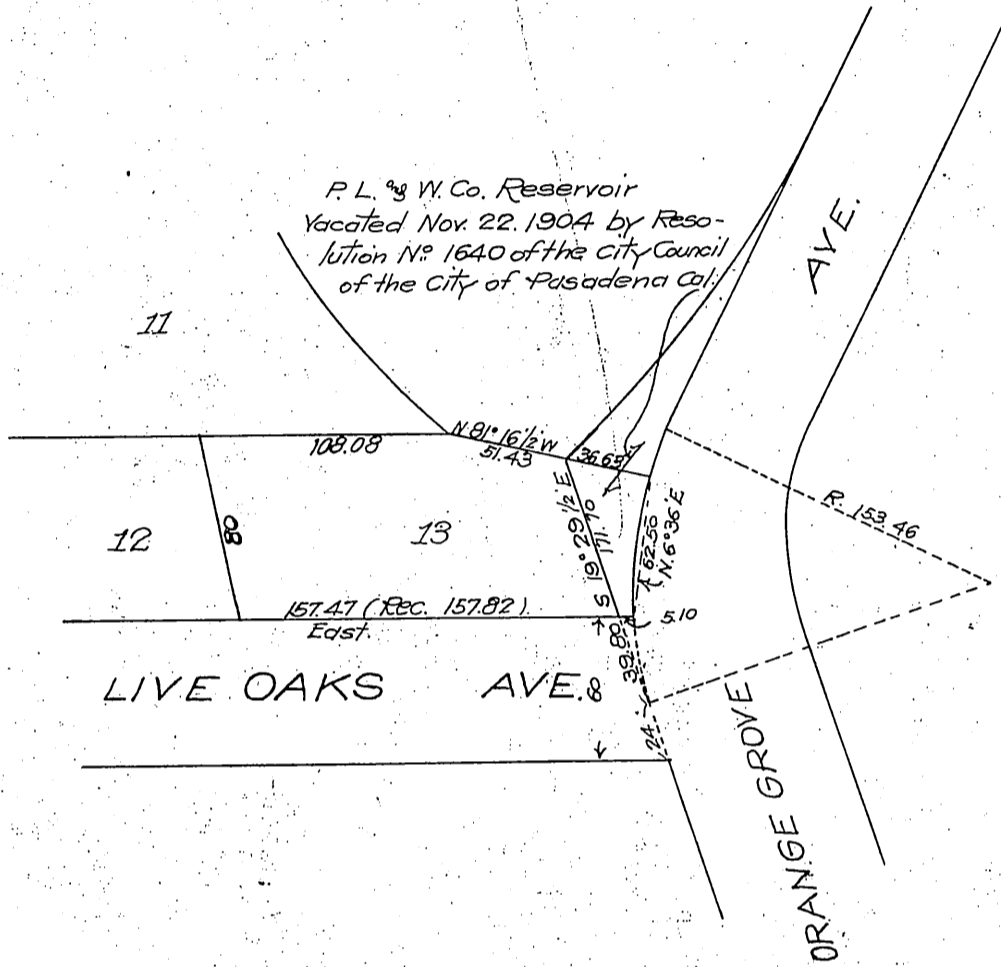
DM 2804-247

247

Jan 52

5

John J. Scott.
-to-
Josephine Ludovici



PLAT

Showing Lot 13, Park Place as recorded in Book 13, pages 61 and 62, Miscellaneous Records of Los Angeles County, State of California, and including a piece of land vacated by the City of Pasadena lying between the easterly line of said Lot 13 and the present westerly line of Orange Grove Avenue in the City of Pasadena to accompany quit claim deed to Josephine Ludovici dated 07/1, 1906.

Surveyed by Allin Bros.
Oct. 1906
Scale 1 inch = 80 feet.

Recorded Oct. 18, 1906.

See 11324219

Handwritten signature or initials in the bottom right corner.

0.280