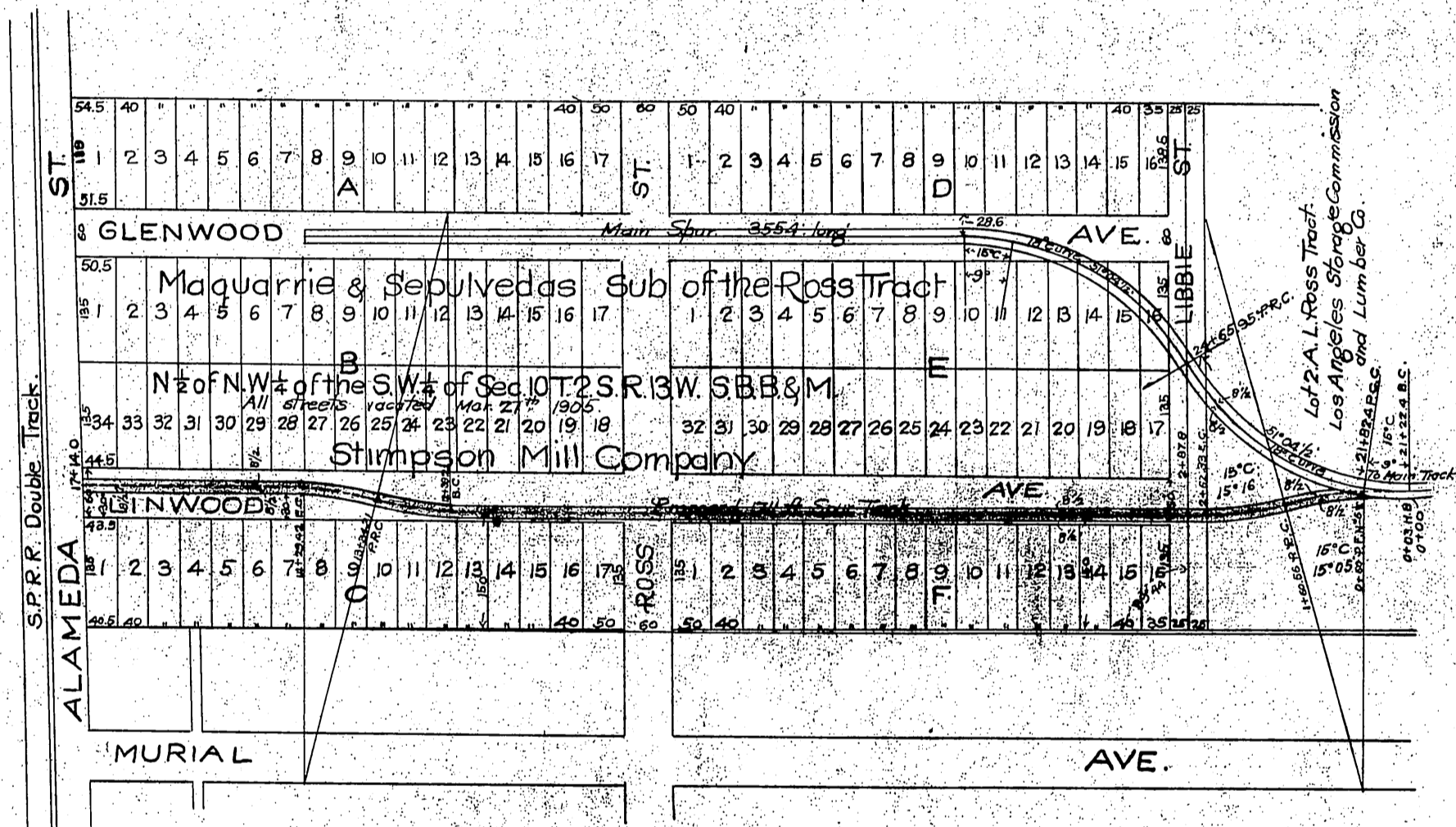


Atchison Topeka & Santa Fe Ry. Co.  
to  
Stimson Mill Co.

→ Exhibit "A" ←  
Attached to Contract between the A. T. & S. F. Ry. Co.  
and Stimson Mill Company Los Angeles Cal. Sept. 9, 1905  
→ C. A. Morse Acting Chief Engineer ←  
Correct as to description M. B. Terrass Resident Engineer  
Scale 200ft. = 1 inch.



Center line of proposed 1711 foot spur track shown by a dotted line  
Right of Way required show colored yellow.