

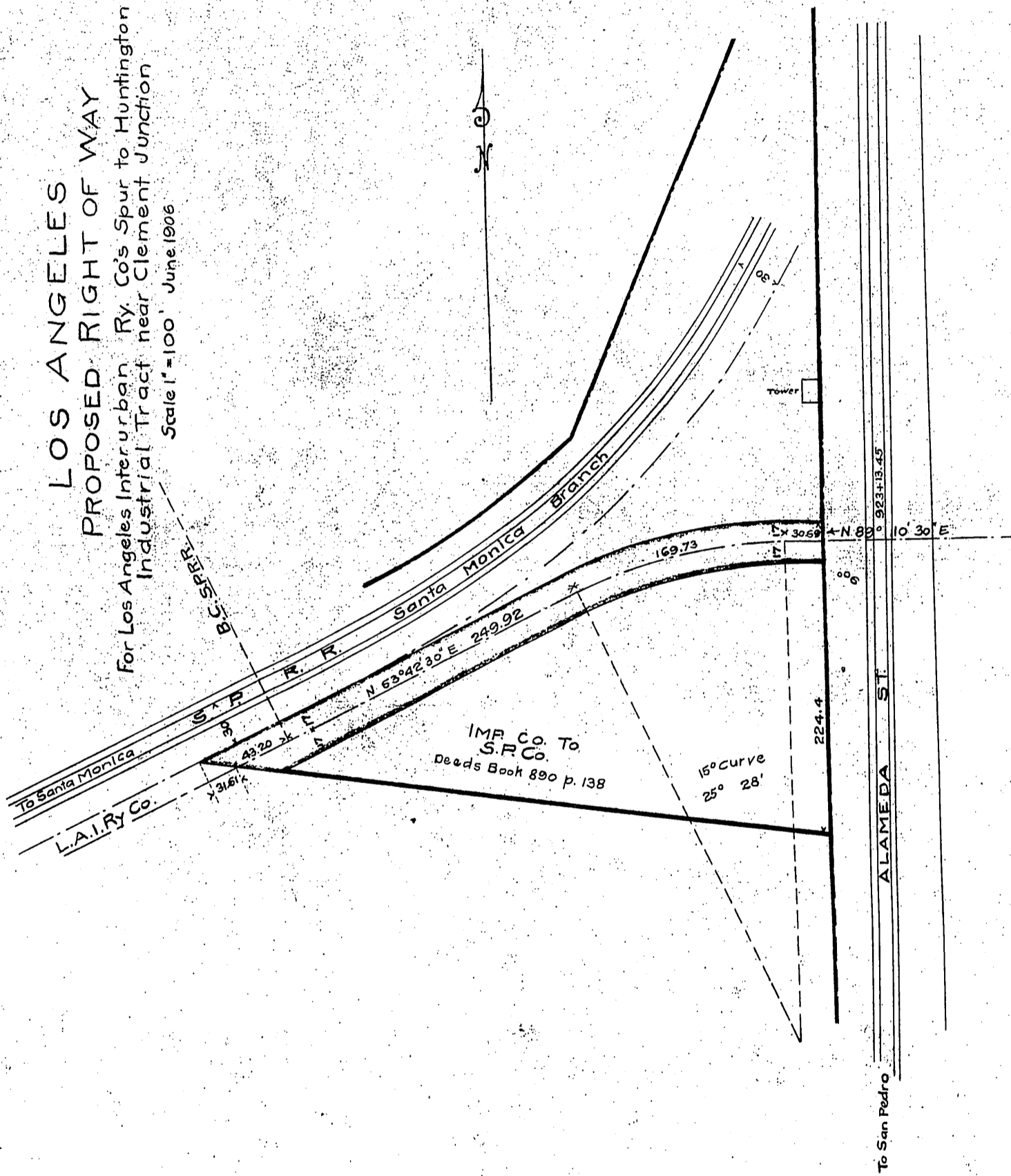
DM 2811-5
10

5
1141
A25
0

Southern Pacific Company
to
Los Angeles Interurban Railway Co.

LOS ANGELES
PROPOSED RIGHT OF WAY

For Los Angeles Interurban Ry. Co's Spur to Huntington
Industrial Tract near Clement Junction
Scale 1" = 100' June 1906



Recorded Sep. 14. 1906

See M. 25. 73