

DM 2831-228

228

4, 5, 7

7 11

14

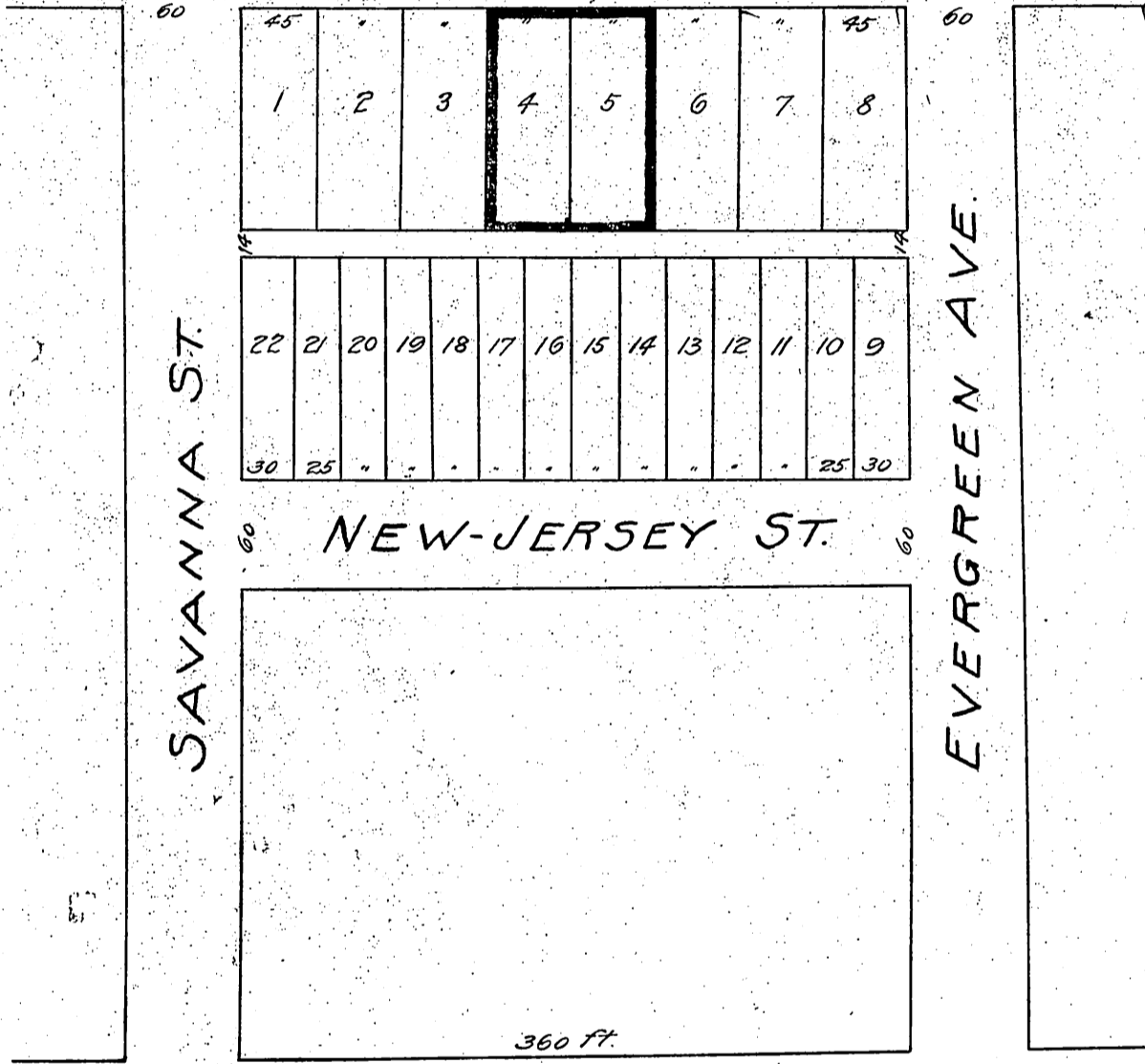
41

JAMES R. GEE
TO
MRS. EDITH ALLEN

CLIFTON TRACT

BROOKLYN AVE.

Note: 14' 2" of lot 5 see deed.



SAVANNA ST.

EVERGREEN AVE.

NEW-JERSEY ST.

MICHIGAN AVE.

Recorded Oct. 29. 1906

See M. 34-126