

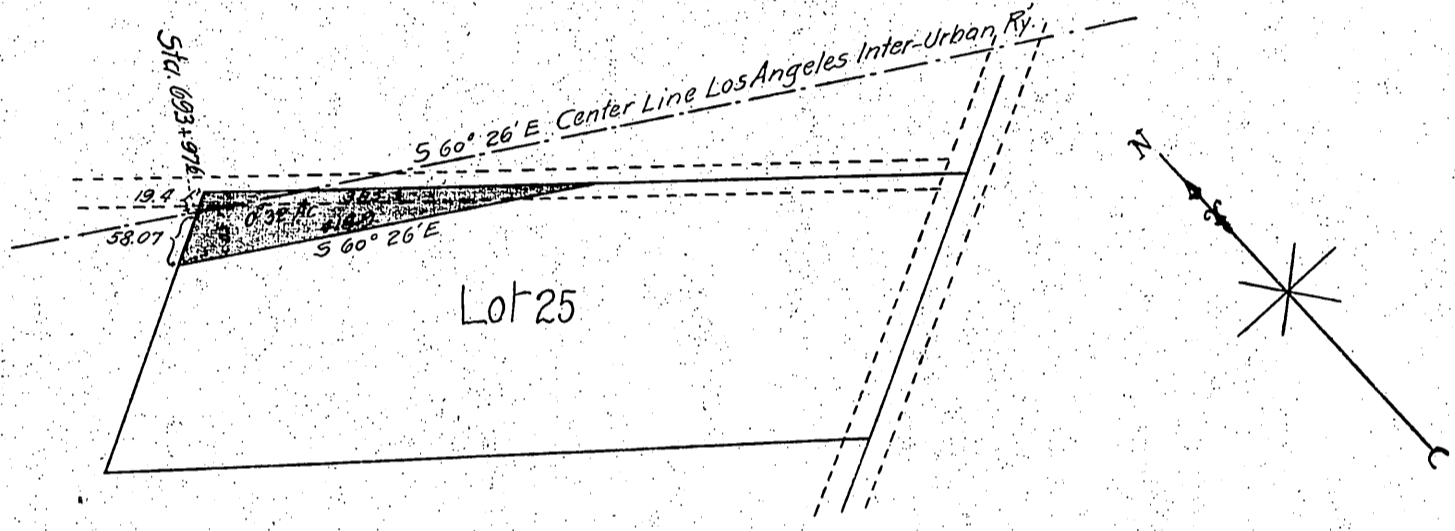
DM 2836-129

53

1906
A. H. H. Co.

Ray J. Flanders and Clara Flanders
to
H. E. Huntington

STODDART'S SUBDIVISION OF
GUNN'S PLAT OF THE BLAISDELL TRACT
Misc. Rec. Book 60 page 17



Scale 200' to One Inch

Recorded Oct. 23, 1906

Shit. on Sec. M. 34. 182 A. H. H. Co.

Complete
1906