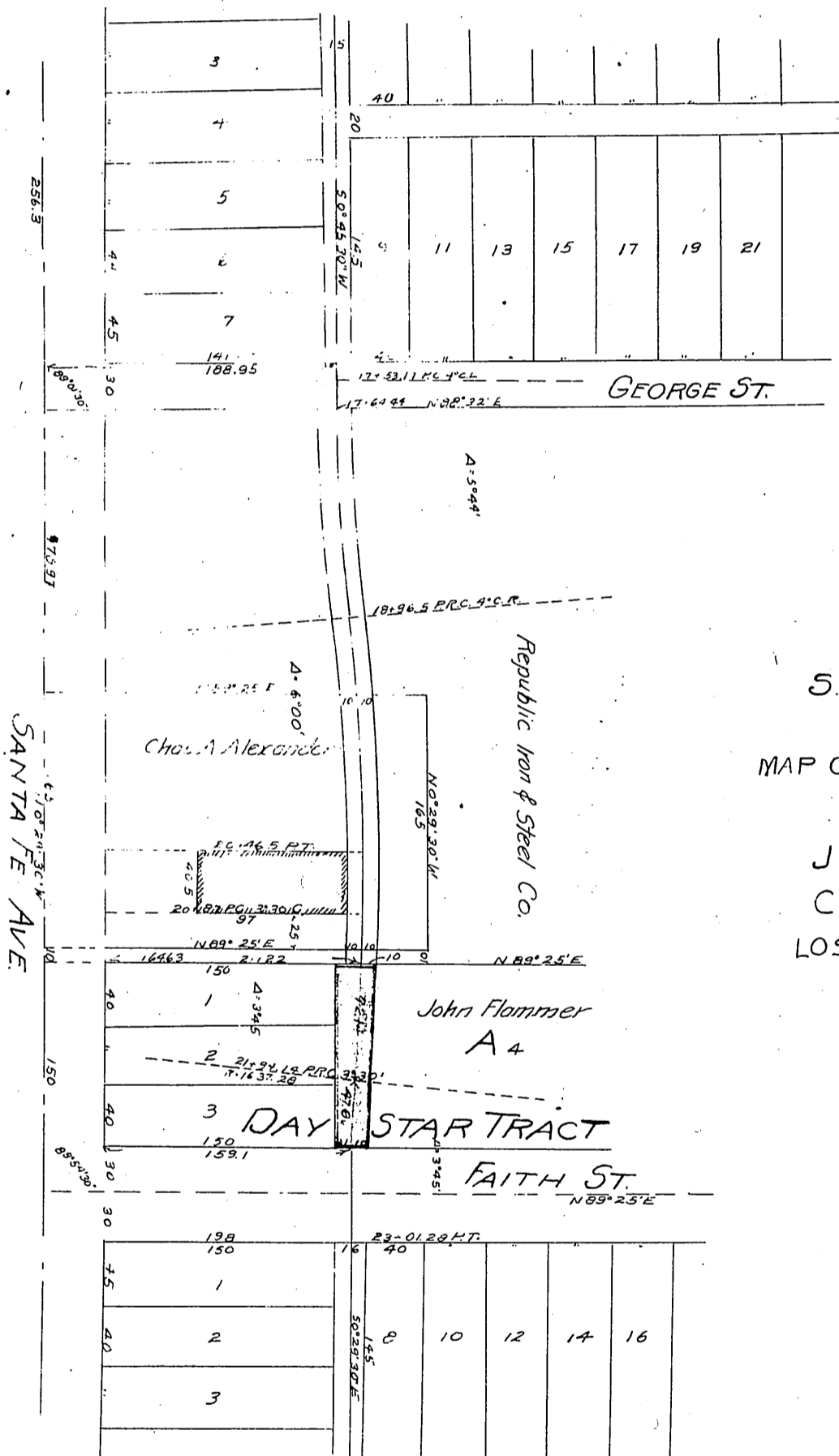


John Flammer }  
Christine E. Flammer } to S.P. L.A. & S.L.R.R.



S.P. L.A. & S.L.R.R.  
 LOS ANGELES DIVISION  
 MAP OF RIGHT OF WAY THROUGH  
 LANDS OF  
 JOHN FLAMMER.  
 CITY OF VERNON  
 LOS ANGELES COUNTY CAL.  
 SCALE 1 IN 100 FT.  
 APPROVED DEC. 12 1906  
 E.M. Jessup E.Mof.W.

Recorded: Feb. 6, 1907.

DM 2908-299  
Sht 357