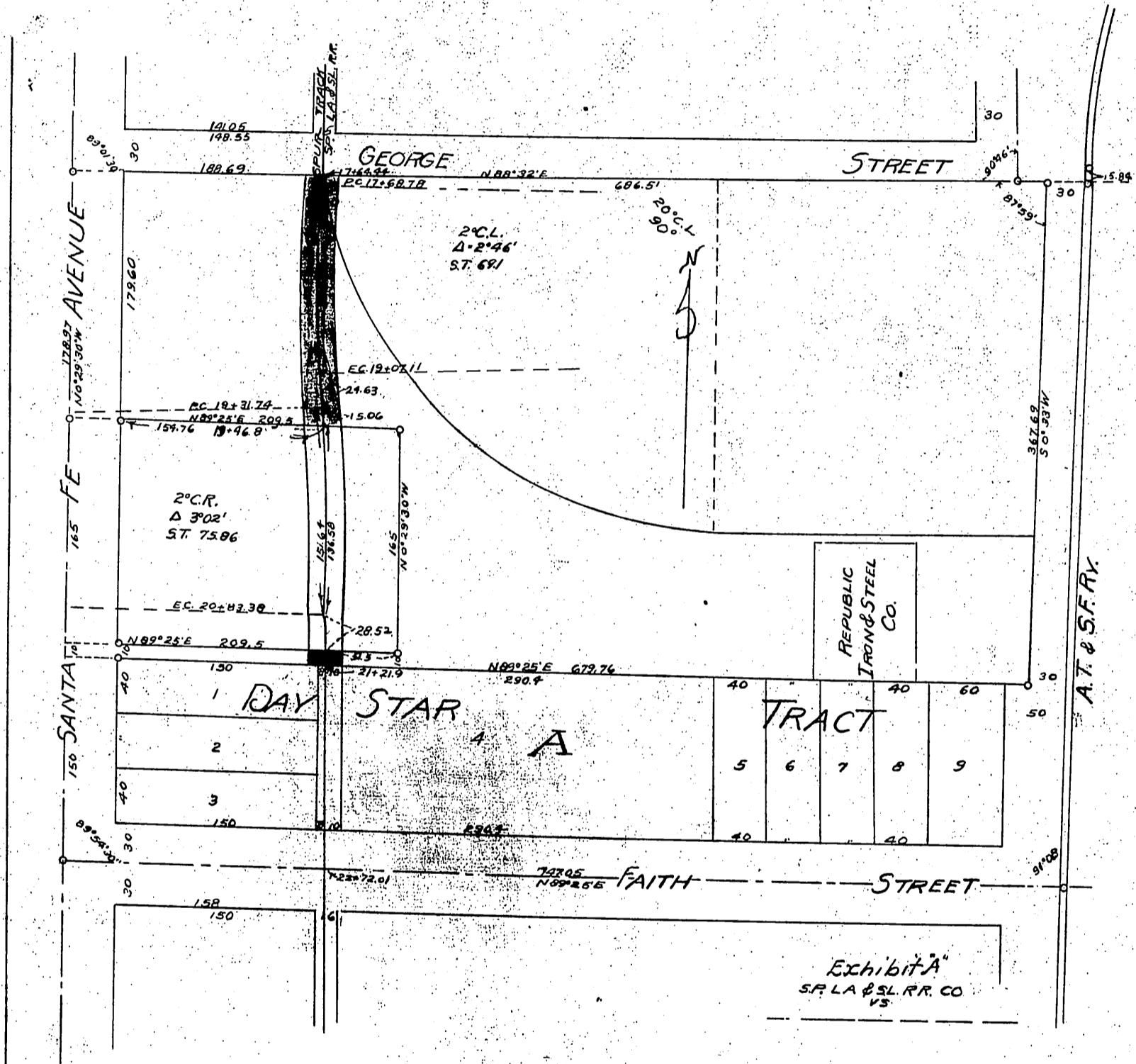


Republic Iron & Steel Co.
to
S.P. LA & S.L. R.R. Co.

60

MAP SHOWING
RIGHT OF WAY SOUGHT TO BE ACQUIRED
BY THE
SAN PEDRO LOS ANGELES & SALT LAKE R.R. CO.
THROUGH THE
BLOCKS BOUNDED BY GEORGE ST. FAITH ST. SANTA FE AVE AND THE WEST PROP. W. LINE OF THE SANTA FE RY.
IN THE
CITY OF VERNON
LOS ANGELES CO CAL.
SCALE 100 FEET TO 1 INCH
OFFICE OF CHIEF ENGINEER LOS ANGELES CAL MAY 8, 1906
F.A.R.



Right of Way sought to be acquired colored

Recorded Feb 8, 1907