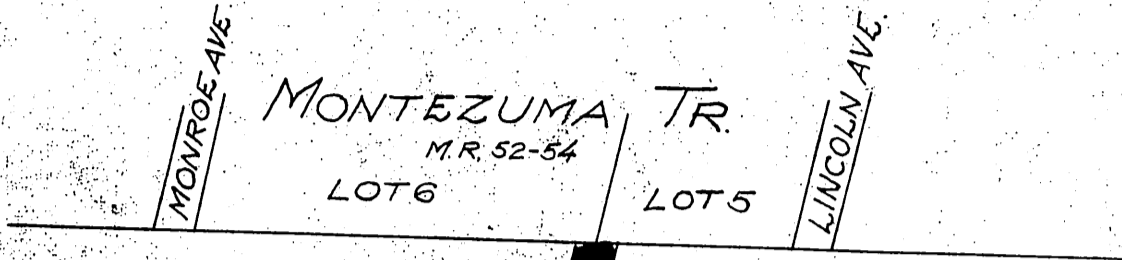
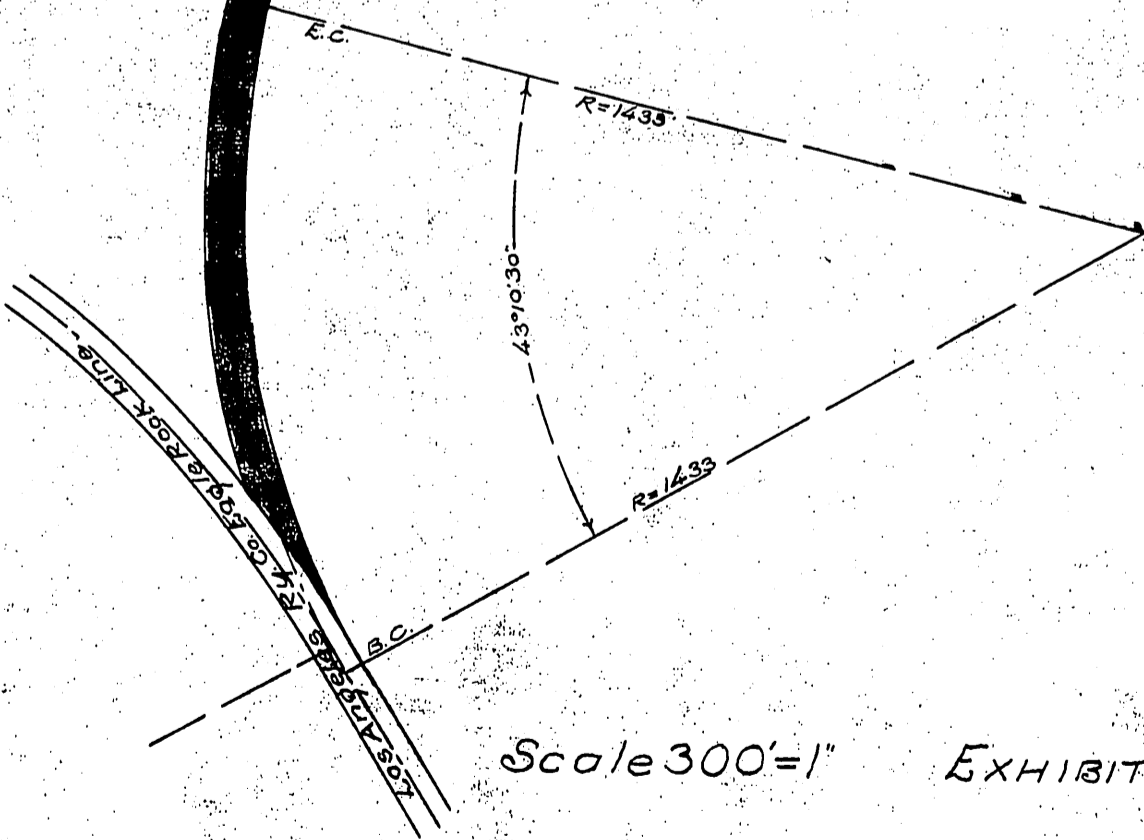


Hugh Glassell } Exer. of Estate of Andrew Glassell
Andrew Glassell } deceased
to
Los Angeles Railway Co.

780



GLASSELL AND CHAPMAN'S 2296.11 AC
ALLOTMENT IN R^o SAN RAFAEL
Case No 1621 District Court
SEC. 35 T. 1 N. R. 13 W. S. B. M



Scale 300'=1" EXHIBIT "B"

Recorded 23, 1907

See N 30-14
780