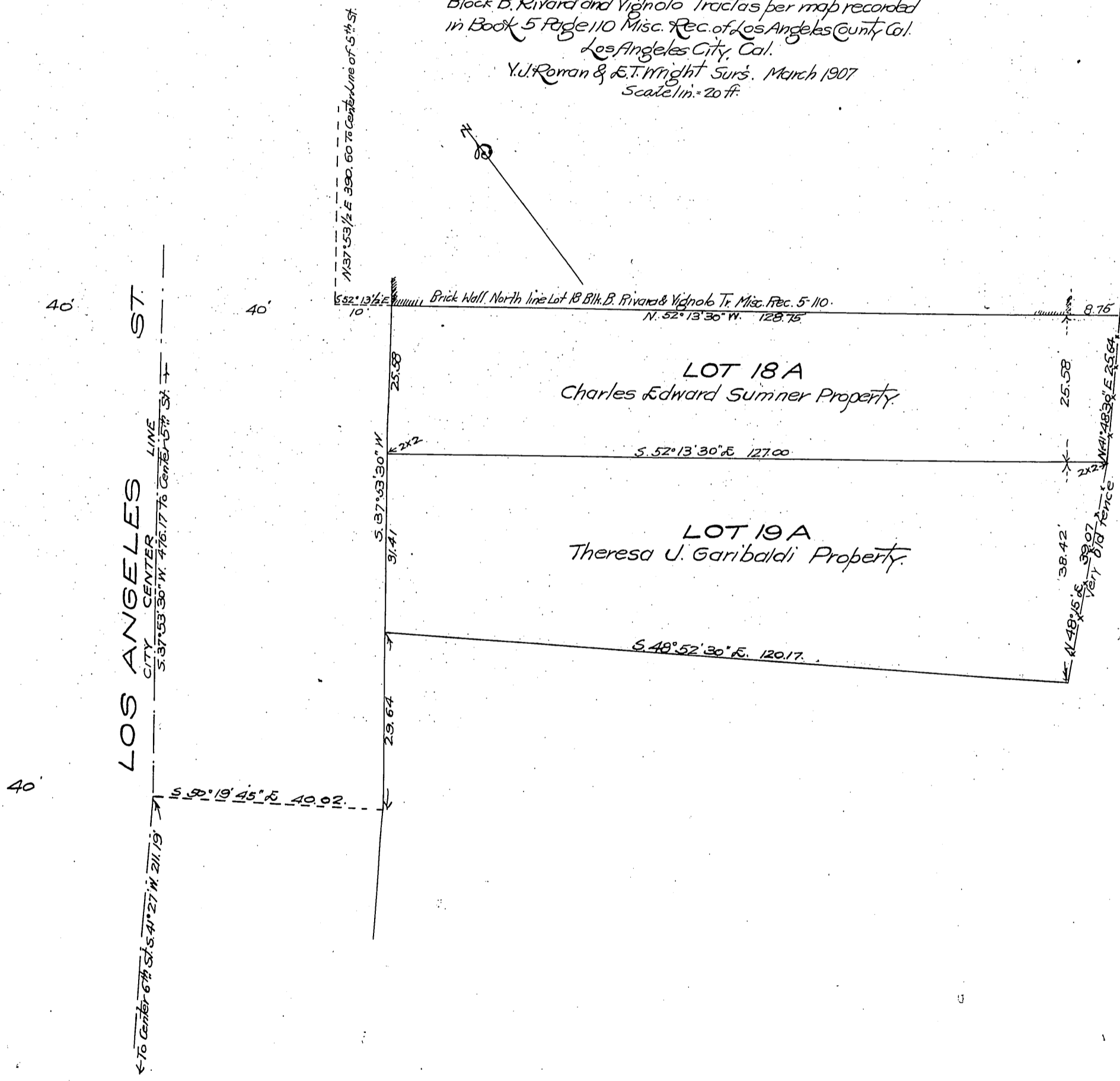


DM 3053-107

89

Quit claim
 Charles Edward Sumner
 to
 Theresa J. Garibaldi
 and
 Theresa J. Garibaldi
 to
 Charles Edward Sumner.

Plot of
SUMNER & GARIBALDI TRACT.
 Being a Subdivision of a portion of
 Block B. Rivara and Vignolo Tracts per map recorded
 in Book 5 Page 110 Misc. Rec. of Los Angeles County Cal.
 Los Angeles City, Cal.
 Y.U. Roman & E.T. Wright Surs. March 1907
 Scale 1 in. = 20 ft.



Recorded Apr. 23, 1907.