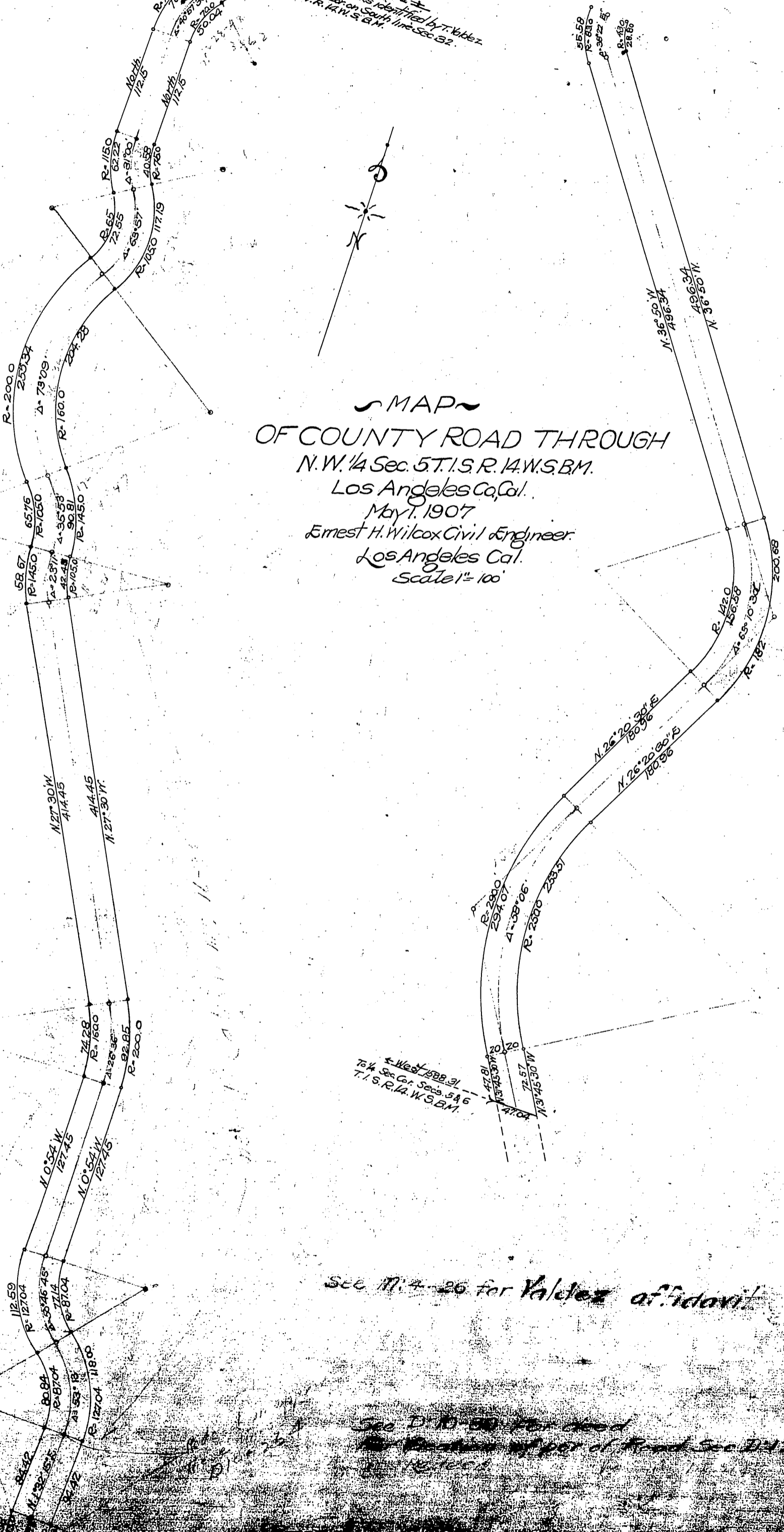


The Laurel Cañon Land Co  
to  
County of Los Angeles

← N 89° 41' W 128.24' to Stake in Mound of Rocks identified by T. Valdez  
by T. Valdez on S.W. Cor. Sec. 32  
T. 1. N. R. 14. W. S. B. M.

→ S 89° 41' E to Stake in Mound of rocks identified by T. Valdez  
on S.W. Cor. of South line Sec. 32  
T. 1. N. R. 14. W. S. B. M.



MAP  
OF COUNTY ROAD THROUGH  
N.W. 1/4 Sec. 5. T. 1. S. R. 14. W. S. B. M.  
Los Angeles Co., Cal.  
May 1, 1907  
Ernest H. Wilcox Civil Engineer  
Los Angeles Cal.  
Scale 1" = 100'

← West 1588.31  
to 1/4 Sec. Cor. Secs. 5 & 6  
T. 1. S. R. 14. W. S. B. M.

See M. 4-20 for Valdez affidavit

See D. 10-50 for deed  
for portion of part of Road Sec. 5 & 6  
T. 1. S. R. 14. W. S. B. M.