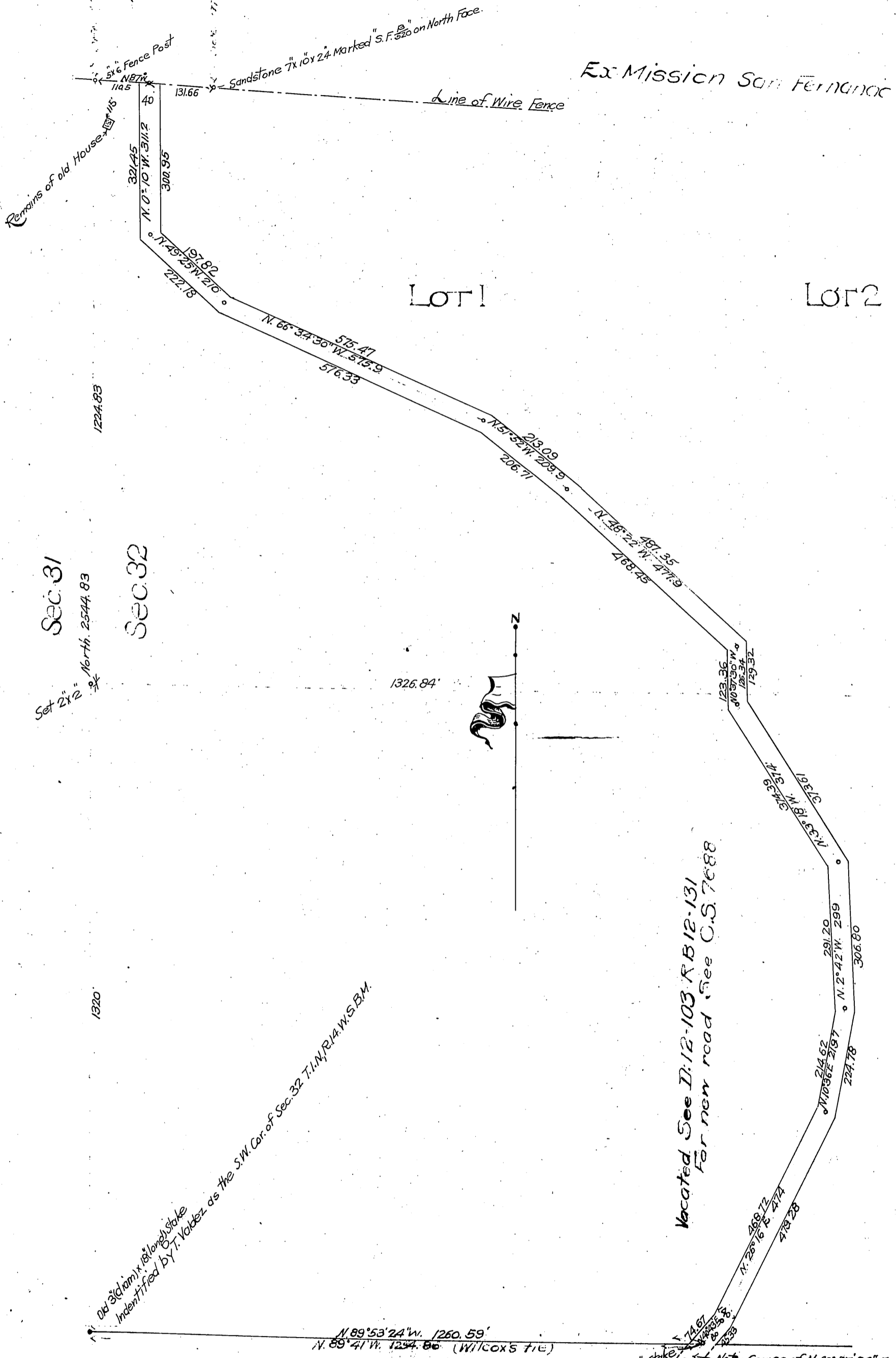


Maria A. C. de Valdez &
Wm. H. Avery
to
County of Los Angeles.

DM 3138-248

60

Ex Mission San Fernando



Sec. 31

Sec. 32

LOT 1

LOT 2

Set 2x2 Stake North 2544.83

1320

1326.84

Old 3x6 diam x 18 long stake
Identified by T. Valdez as the S.W. Cor. of Sec. 32 T.1N, R.14W, S.B.M.

Vacated See D: 12-103 R B 12-131
For new road (See C.S. 7688)

N. 89° 53' 24" W. 1260.59'
N. 89° 41' W. 1294.80 (Wilcox's tie)

Note: Course of N. 40° 57' 36" E.
Given in D: 3074-249 equals
N. 40° 43' E on this Survey

Map of strip of land 40 feet wide for road through
Sec. 32, T.1N, R.14W, S.B.M. as surveyed in August 1907
by E. O. Severance, Surveyor.
Scale - 1 inch = 200 feet.

Dec 12-92
H 85
Recorded Sep 13 1907

LAUREL CANYON COUNTY ROAD