

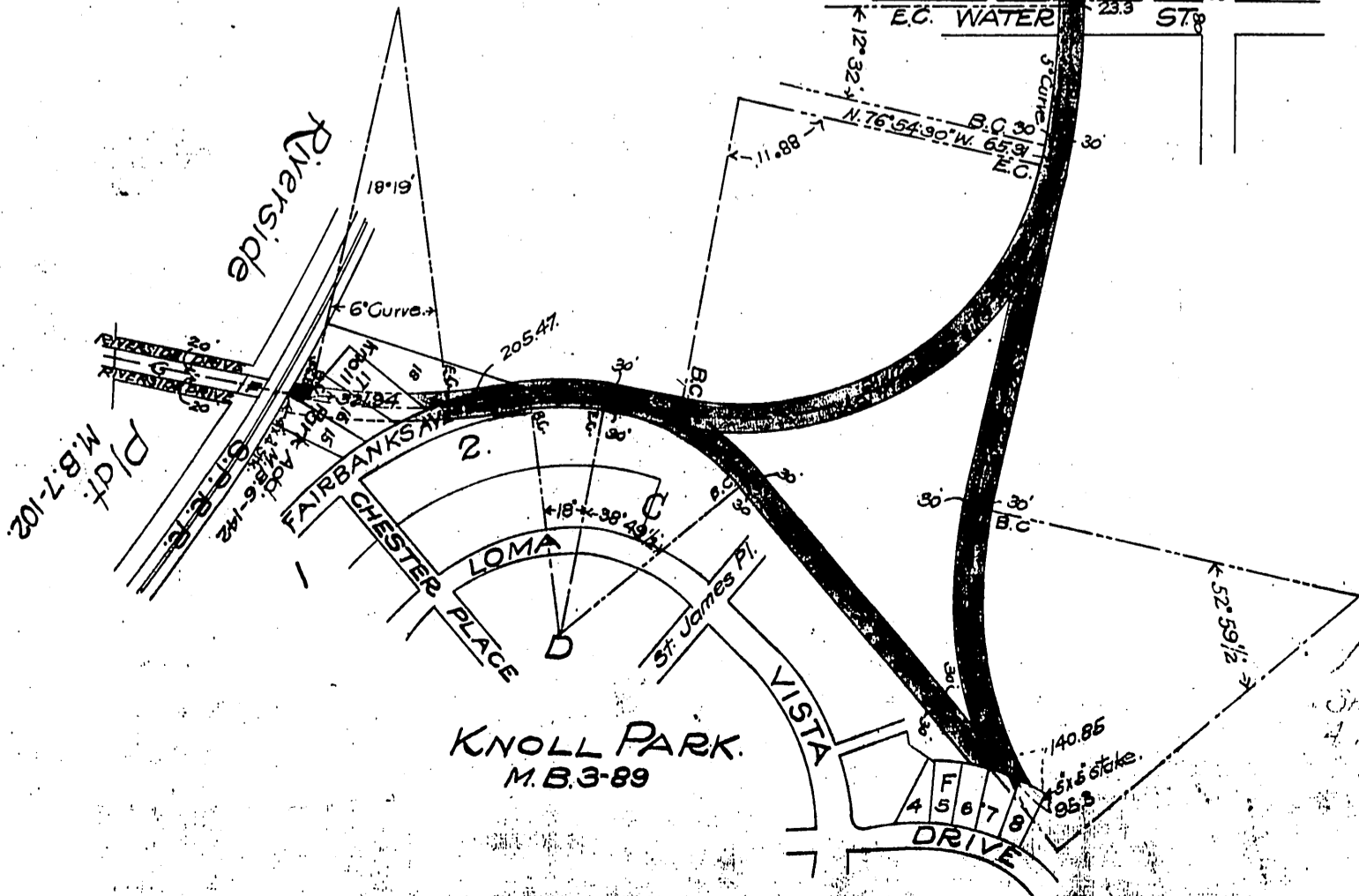
Los Angeles Dock & Terminal Co.

Los Angeles Dock & Terminal Co
The Land and Navigation Co. (Joining
herein) - to -
H. E. Huntington Trustee.

Ro. San Pedro
Blk. W. Seabright Being
a Subd. of a Portion of the Recorded
Map of Seabright. M. B. 10-149.

Scale 1" = 400'
May 1, 1907

CITY OF LONG BEACH



11.0-0
Int. Dr. 30
4.150

Recorded Dec. 10, 1907