

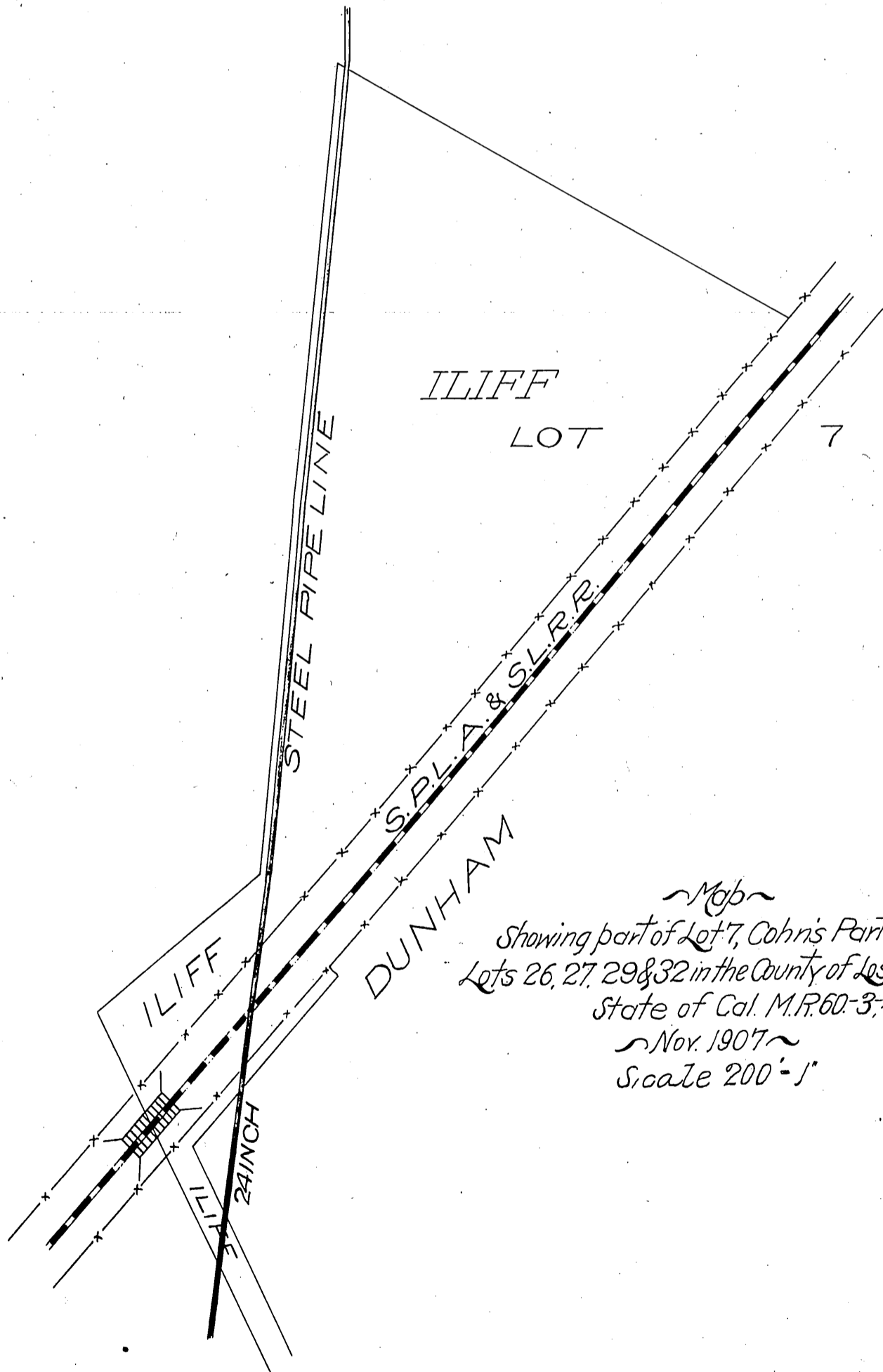
DM 3302-150

78

150

25 "

Margaret J. Iliff grants to the
East Whittier Land and Water Company
Rt. of Way for Steel Pipe Line.



Mgb
Showing part of Lot 7, Cohn's Partition of
Lots 26, 27, 29 & 32 in the County of Los Angeles
State of Cal. M.R. 60-3, 4.
Nov. 1907
Scale 200' = 1"

Recorded Jan. 31, 1908.

ST. J. H. ...