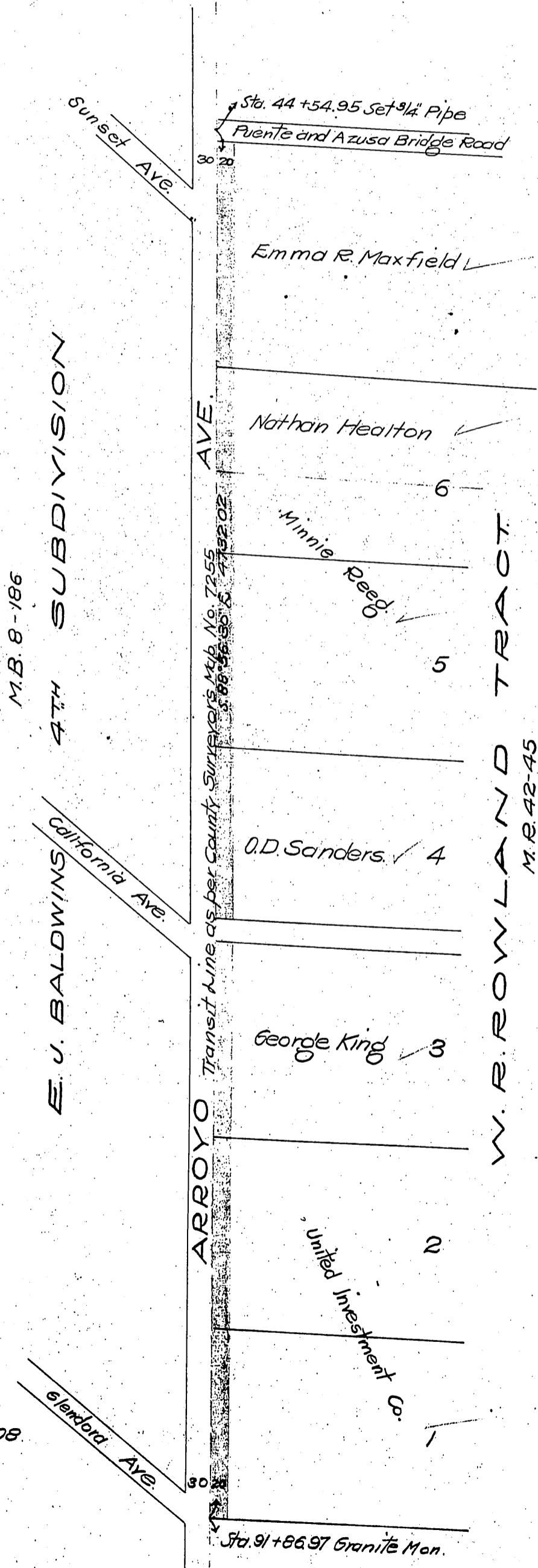


01-12  
1810  
4126

AE

- ✓ Nathan Heaton
- ✓ Minnie Reed
- ✓ Emma R. Maxfield
- ✓ Geo. King
- ✓ O. D. Sanders
- ✓ United Invest. Co

To County of Los Angeles



M.B. 8-186

M.R. 42-45

See D:10-140

Recorded June 19-1908

Glendora Ave.

Sta. 91+86.97 Granite Mon.