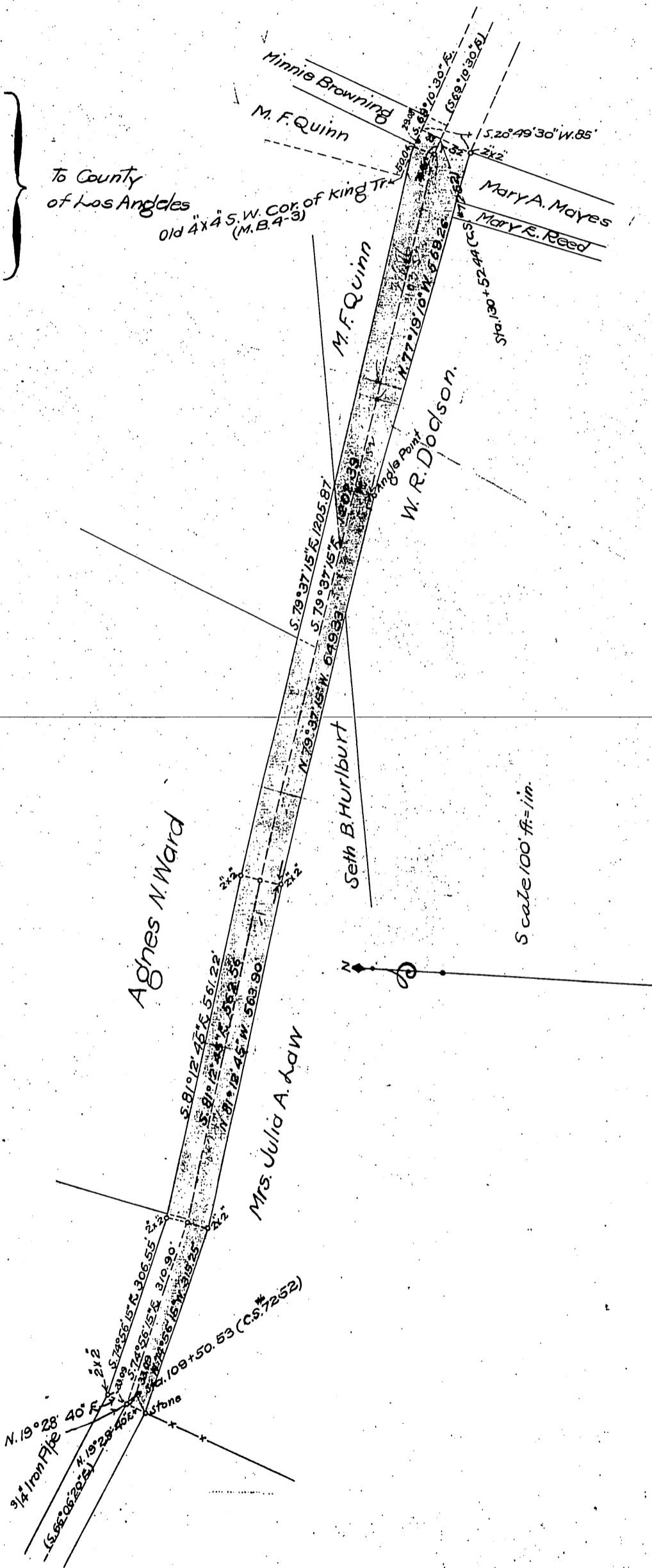


For deed to Pomona Blvd. see D: 29-269 O.R. 425-285
Pomona Blvd. changed to Valley Blvd. D: 49-216

Mary E. Reed
Minnie Browning
W. R. Dodson
Mary A. Mayes
Julia A. Law
M. F. Quinn
Agnes N. Ward
Seth B. Hurlburt

To County
of Los Angeles



Scale 100' ft. = 1 in.

Recorded July 3, 1908
(Scale reduced to 200' = 1")

D10-144
See G.S. 1252

Sh 11-115