

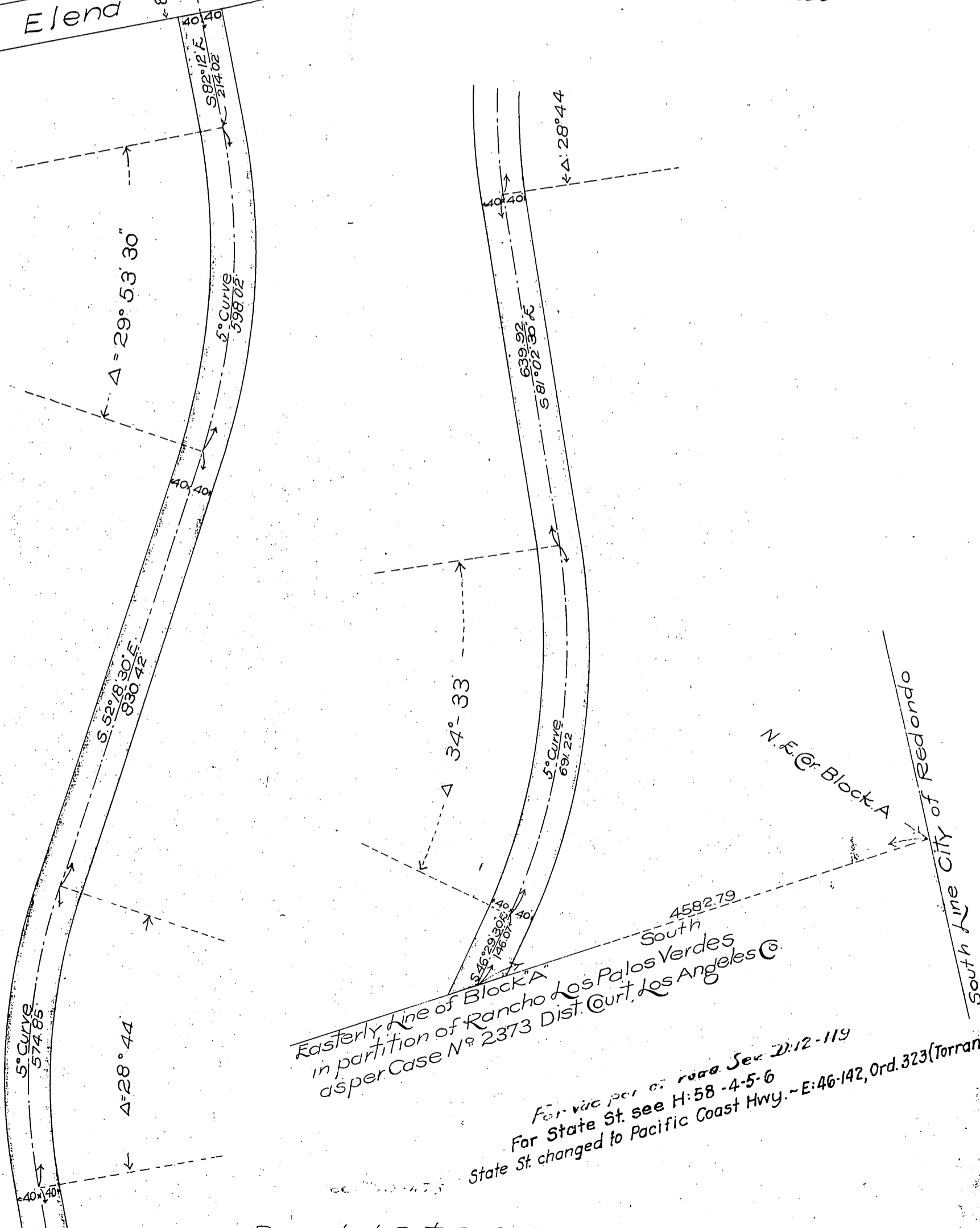
Huntington Redondo Co.
County of Los Angeles

CLIFTON
Maps 10-105

Elena Ave.



Scale: 1" = 200'



Easterly line of Block A
in partition of Rancho Los Palos Verdes
as per Case No. 2373 Dist. Court, Los Angeles Co.

For vac per Ord. 1000 Sec. 2:12-119
For State St. see H: 58-4-5-6
State St. changed to Pacific Coast Hwy. - E: 46-142, Ord. 323 (Torrance)

Recorded Oct 12, 1908

Huntington Redondo City

D3525