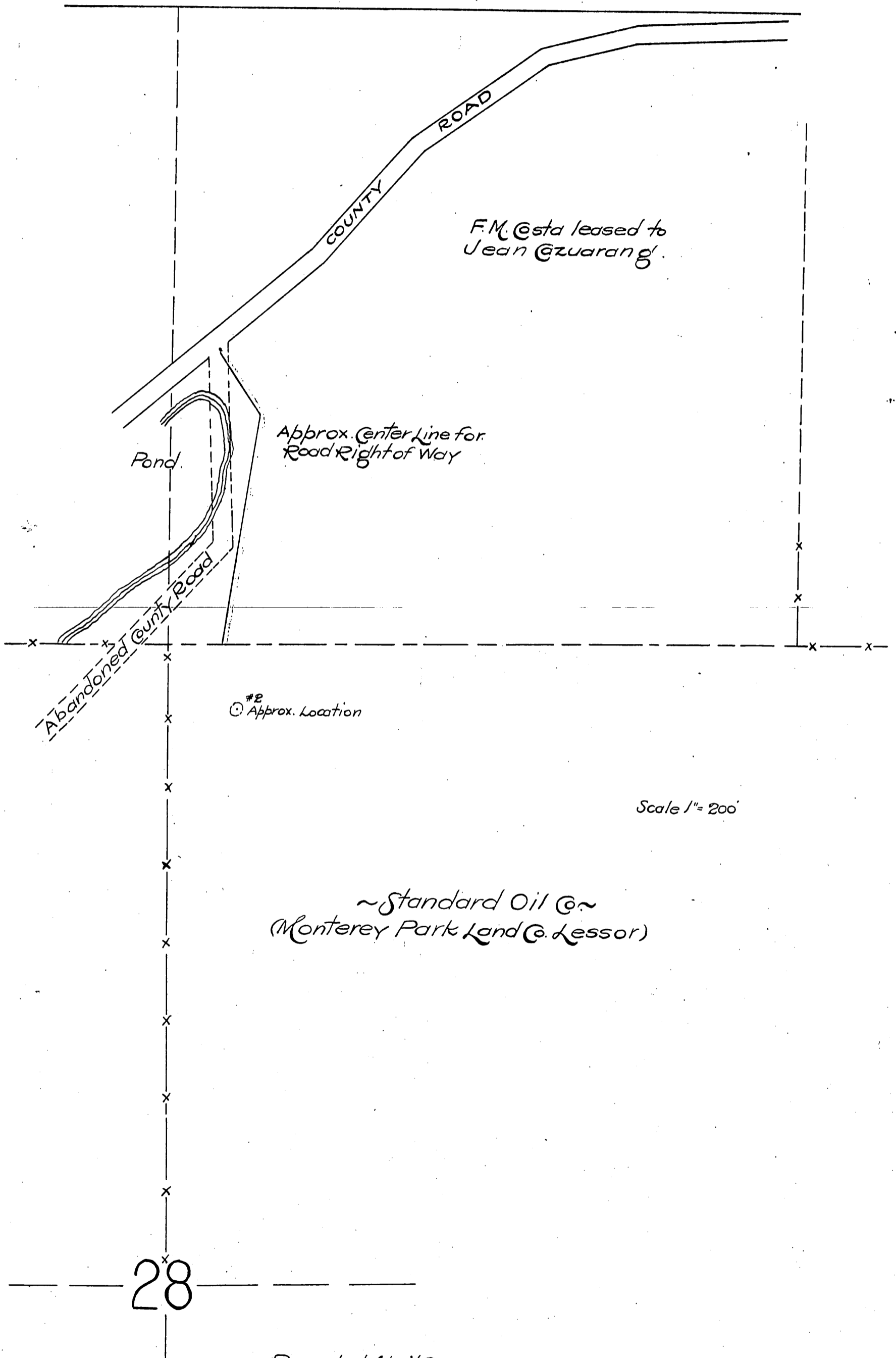


DM 7313-89

85

85

Jean Guzarang
to
Standard Oil Company.



F.M. Esta leased to
Jean Guzarang.

Approx. Center Line for
Road Right of Way

Pond.

Abandoned County Road

#2
Approx. Location

Scale 1" = 200'

~ Standard Oil Co ~
(Monterey Park Land Co. Lessor)

28

Recorded April 9, 1909.

A-99A

Sht O.A.

Comp. H.C.T.