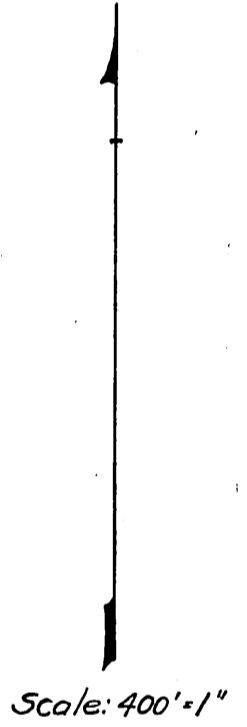
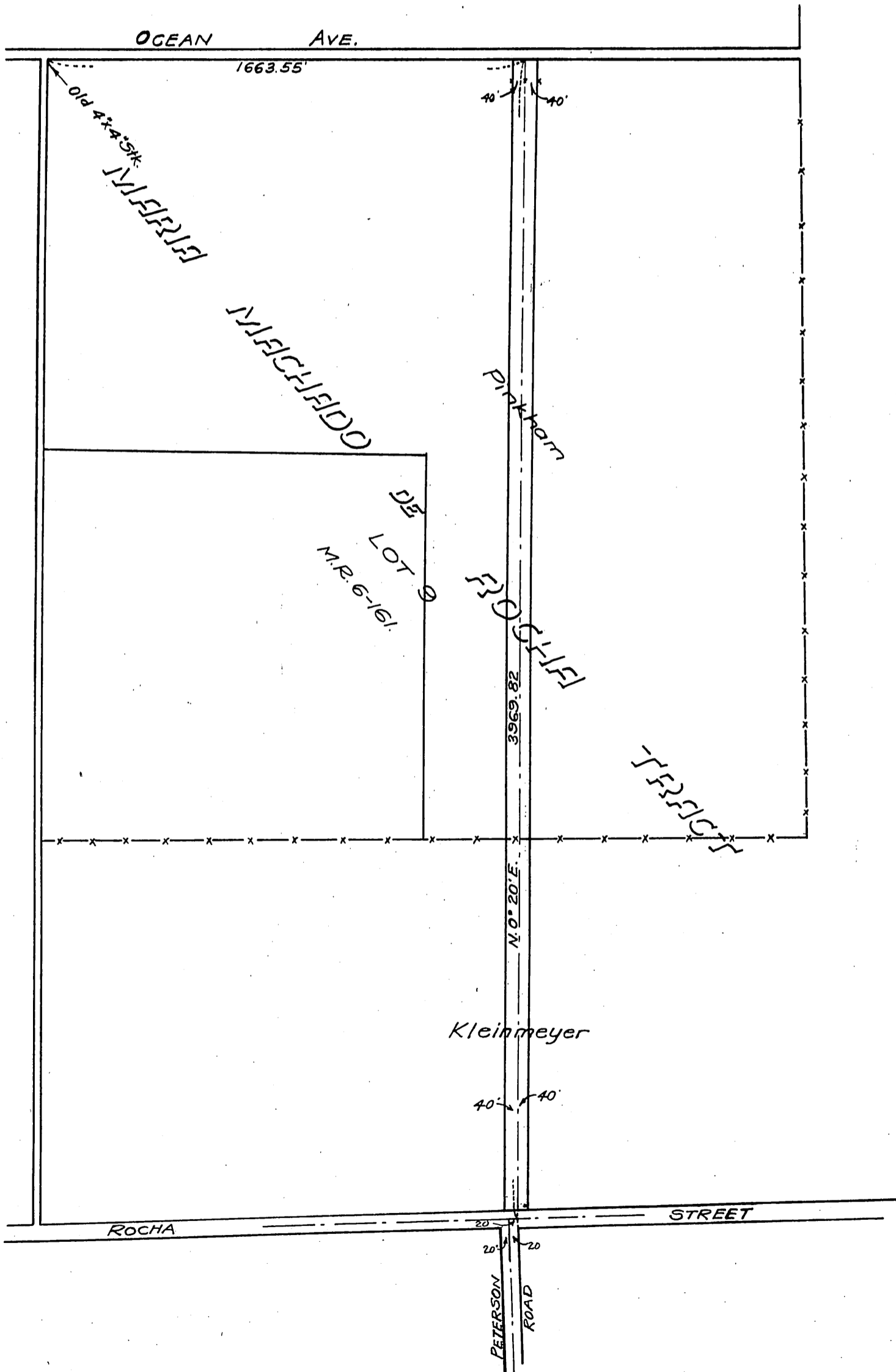


DM 3734-216

3

{ E. F. Kleinmeyer
 Mary Pinkham
 Mary Pinkham, Trustee
 Ralph Pinkham
 Lillian Foster
 by her Attorney in fact W. H. Pinkham.
 Helen Pinkham
 by her Attorney in fact W. H. Pinkham.
 Walter Pinkham
 to
 Los Angeles County.



D: 10-204

Recorded June 14, 1909.

Sht. 28.
D: 3734