

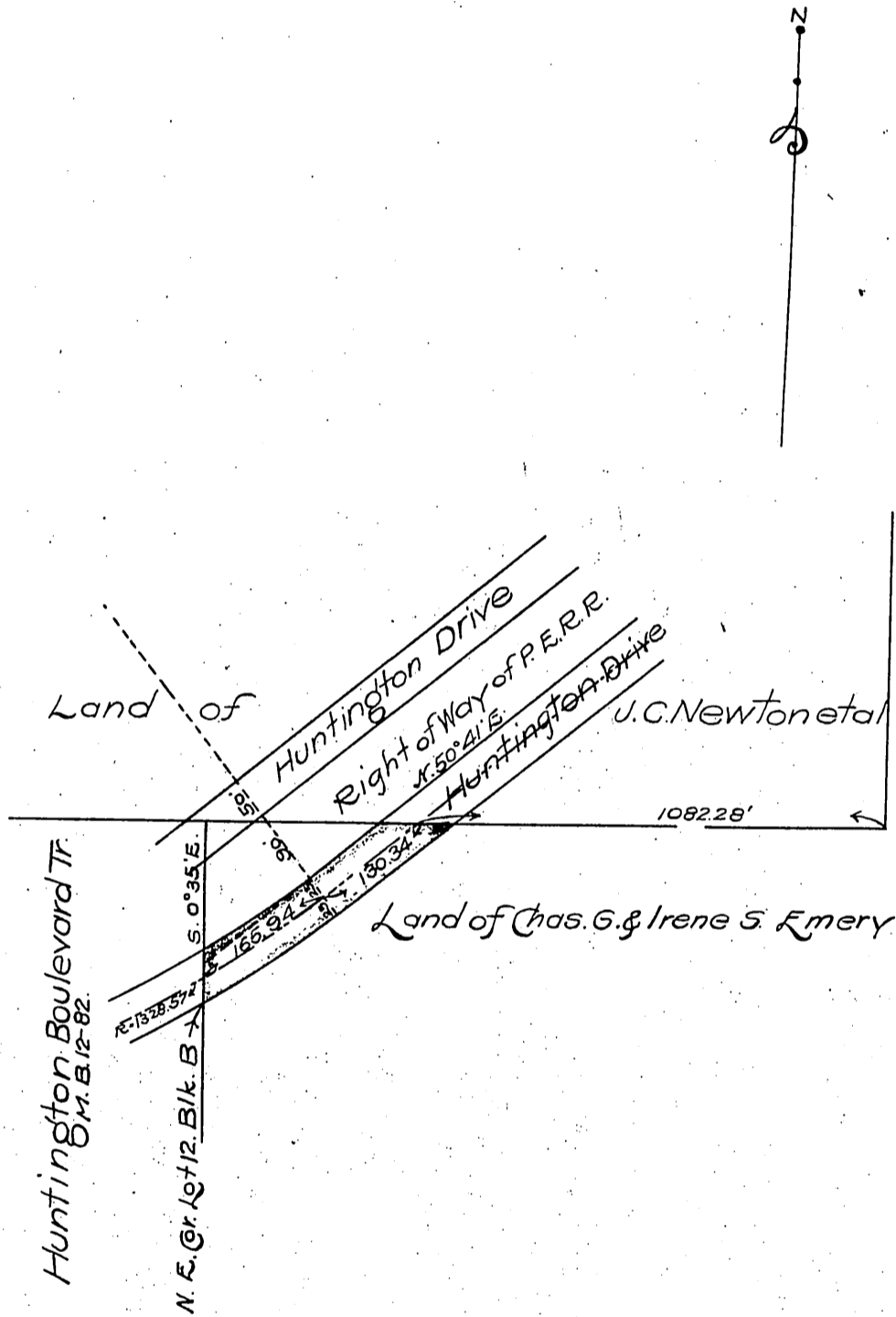
DM 3855-123

59

123  
9117  
1812  
911

22

Pacific Electric Ry. Co.  
Chas. G. Emery.  
to  
County of Los Angeles.



See D:10-22.

Office Note:

This deed evidently in error; apparently intended to deed road as per C.S. 7243, covered by D:10-197. The P.E.Ry. Co did not sign this deed (3855-123)

Recorded Sep. 25, 1909.