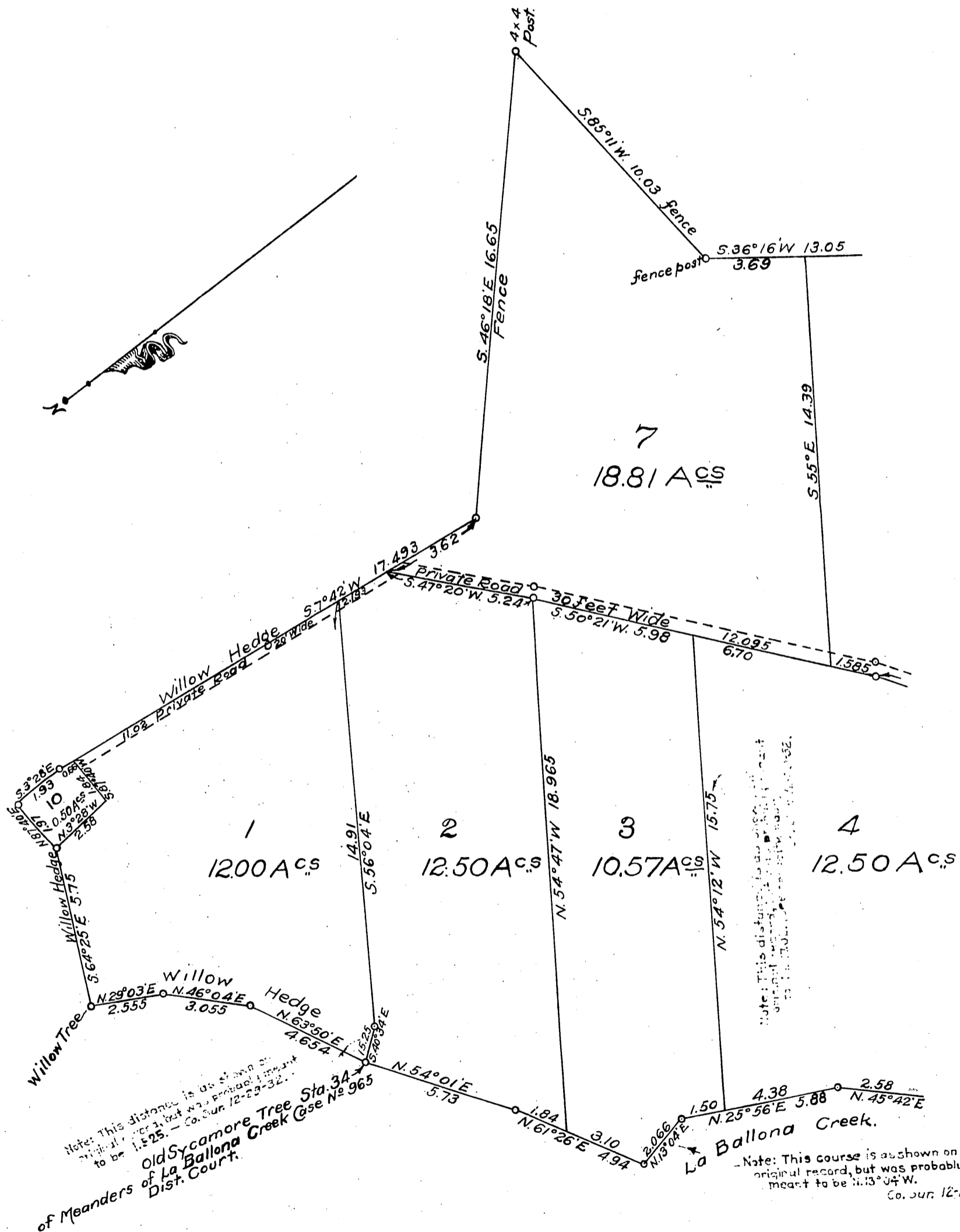


Map of the LEIDEL
~TRACT~

Being a resubdivision of a portion of the 124.85 Acre Tract of land allotted to {Macedonio Aguilar and a Portion of Land allotted to Benina Talamantes} in the partition of the Rancho La Ballona, Suit No 965 District Court, Los Angeles County, Cal. Surveyed Dec. 1908 and Jan. 1909, J.A. Bernal Sur. & C.E. Scale 4 chain to one inch.



For Ballona Creek see C.S. 6 94 Sht. 1
Por. Lot 1 for Sawtelle Blvd. D:76-139 a.R. 9293-223