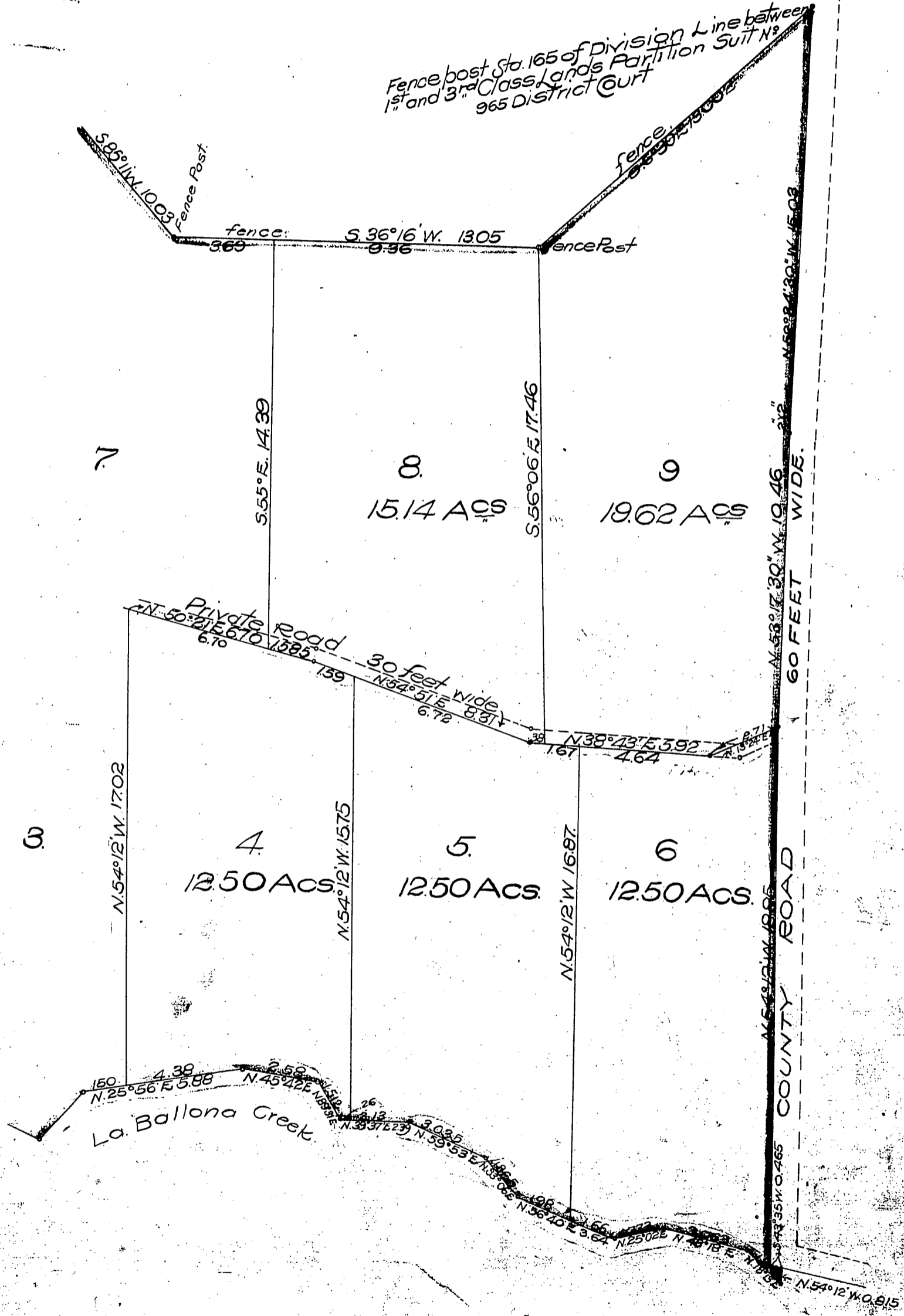


65



Vac. per. Compton-Santa Monica Rd. D: 26-149 M.R. 302-208
 Compton & Santa Monica Rd. changed to Inglewood Ave. D: 13-187 R.B. 28-166
 Por. lot 9 for Jefferson Blvd. D: 45-261-O.R. 4885-322

Recorded Oct. 27 1909.