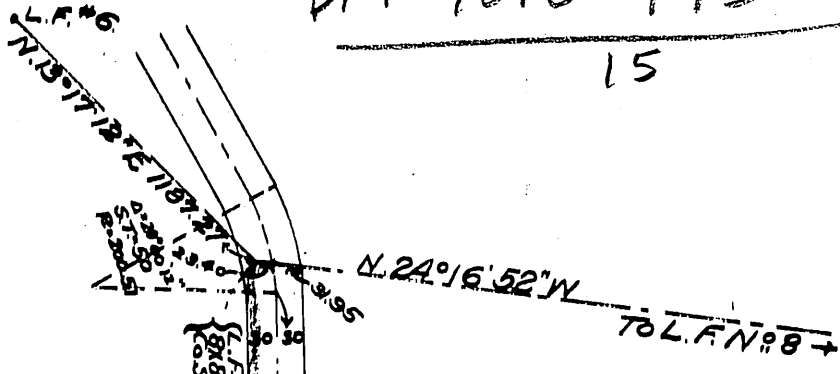


DM 4016-195

15



L.F. # 6  
L.F. # 7  
L.F. # 8  
L.F. # 9  
L.F. # 10  
L.F. # 11  
L.F. # 12  
L.F. # 13  
L.F. # 14  
L.F. # 15  
L.F. # 16  
L.F. # 17  
L.F. # 18  
L.F. # 19  
L.F. # 20  
L.F. # 21  
L.F. # 22  
L.F. # 23  
L.F. # 24  
L.F. # 25  
L.F. # 26  
L.F. # 27  
L.F. # 28  
L.F. # 29  
L.F. # 30  
L.F. # 31  
L.F. # 32  
L.F. # 33  
L.F. # 34  
L.F. # 35  
L.F. # 36  
L.F. # 37  
L.F. # 38  
L.F. # 39  
L.F. # 40  
L.F. # 41  
L.F. # 42  
L.F. # 43  
L.F. # 44  
L.F. # 45  
L.F. # 46  
L.F. # 47  
L.F. # 48  
L.F. # 49  
L.F. # 50  
L.F. # 51  
L.F. # 52  
L.F. # 53  
L.F. # 54  
L.F. # 55  
L.F. # 56  
L.F. # 57  
L.F. # 58  
L.F. # 59  
L.F. # 60  
L.F. # 61  
L.F. # 62  
L.F. # 63  
L.F. # 64  
L.F. # 65  
L.F. # 66  
L.F. # 67  
L.F. # 68  
L.F. # 69  
L.F. # 70  
L.F. # 71  
L.F. # 72  
L.F. # 73  
L.F. # 74  
L.F. # 75  
L.F. # 76  
L.F. # 77  
L.F. # 78  
L.F. # 79  
L.F. # 80  
L.F. # 81  
L.F. # 82  
L.F. # 83  
L.F. # 84  
L.F. # 85  
L.F. # 86  
L.F. # 87  
L.F. # 88  
L.F. # 89  
L.F. # 90  
L.F. # 91  
L.F. # 92  
L.F. # 93  
L.F. # 94  
L.F. # 95  
L.F. # 96  
L.F. # 97  
L.F. # 98  
L.F. # 99  
L.F. # 100

N. 24° 16' 52" W  
TO L.F. N. # 8

RANCHO SANTA EULALIA

HEIRS OF

W. C. B. RICHARDSON

Bert W. Richardson  
Elkanah W. Richardson  
Gomar S. Richardson  
by Albert M. Stephens  
his Atty in fact  
To  
County of Los Angeles.

Scale 1"=200'

N 57° 53' 40" E

1773.86

19° 40' 48"

THIS line is a prolongation of the Northern line to S. 63° 52' 57.38"

Western Art Tile Co

Southern Pacific Right of Way  
0° 30' C. To E.

Depot Grounds

Tropico Ave

See D:10-254  
See Ord. 44693

Recorded Jan. 17-1910

D:4016

Comp. E. R.