

DEL REY COMPANY  
TO  
THE COUNTY OF LOS ANGELES

42

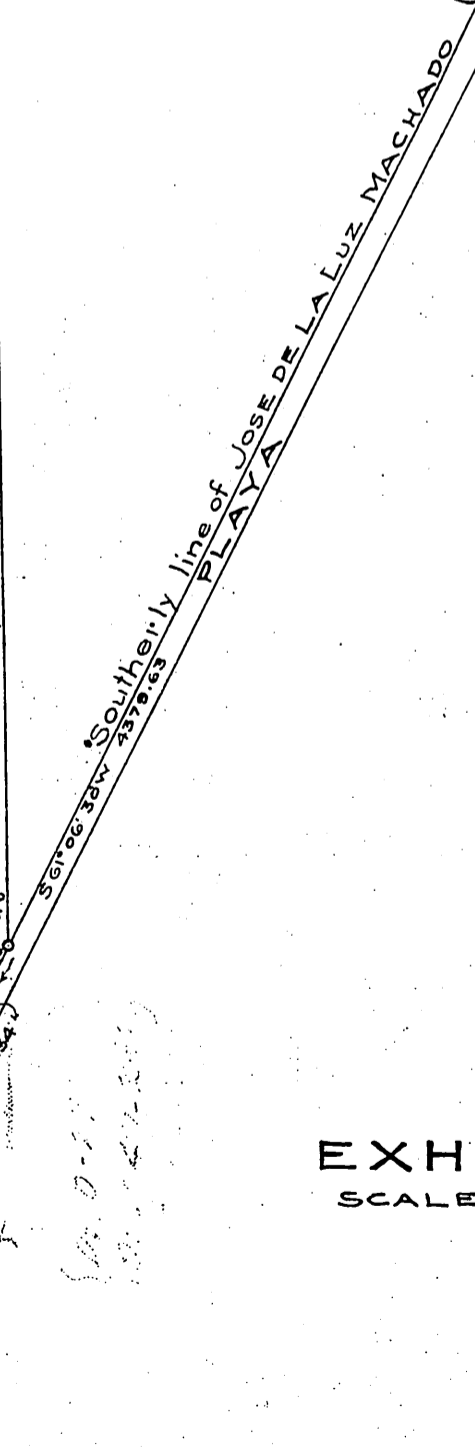
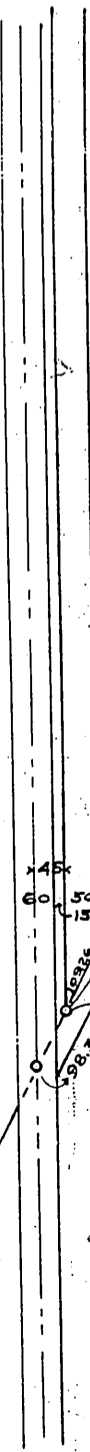
INGLEWOOD DIVISION

L.A.P. CO'S TRACK DIVISION

DEL REY

N 33 52 30 E 5534.59  
S 33 52 30 W 5510.38

2.75  
272  
553.65  
N 67 18 20 E



Por. Culver Blvd. vacated - E-8-133, O.R. 16296-171  
15' strip for Del Rey Blvd. - D-43-32, O.R. 4821-11

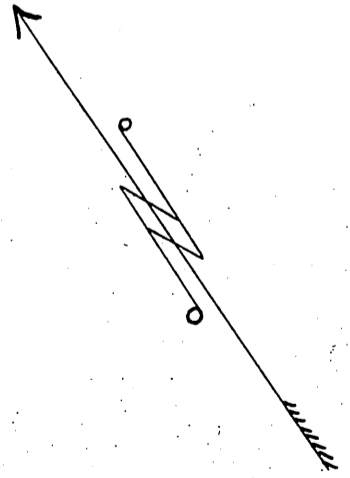
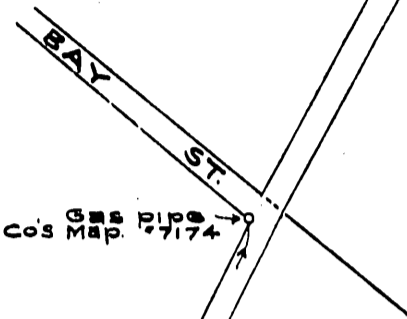


EXHIBIT A  
SCALE 1" = 300'

See D:10-272

RECORDED MAR 4, 1910.

Sht 23 A. 10

Comp. E. J. H.