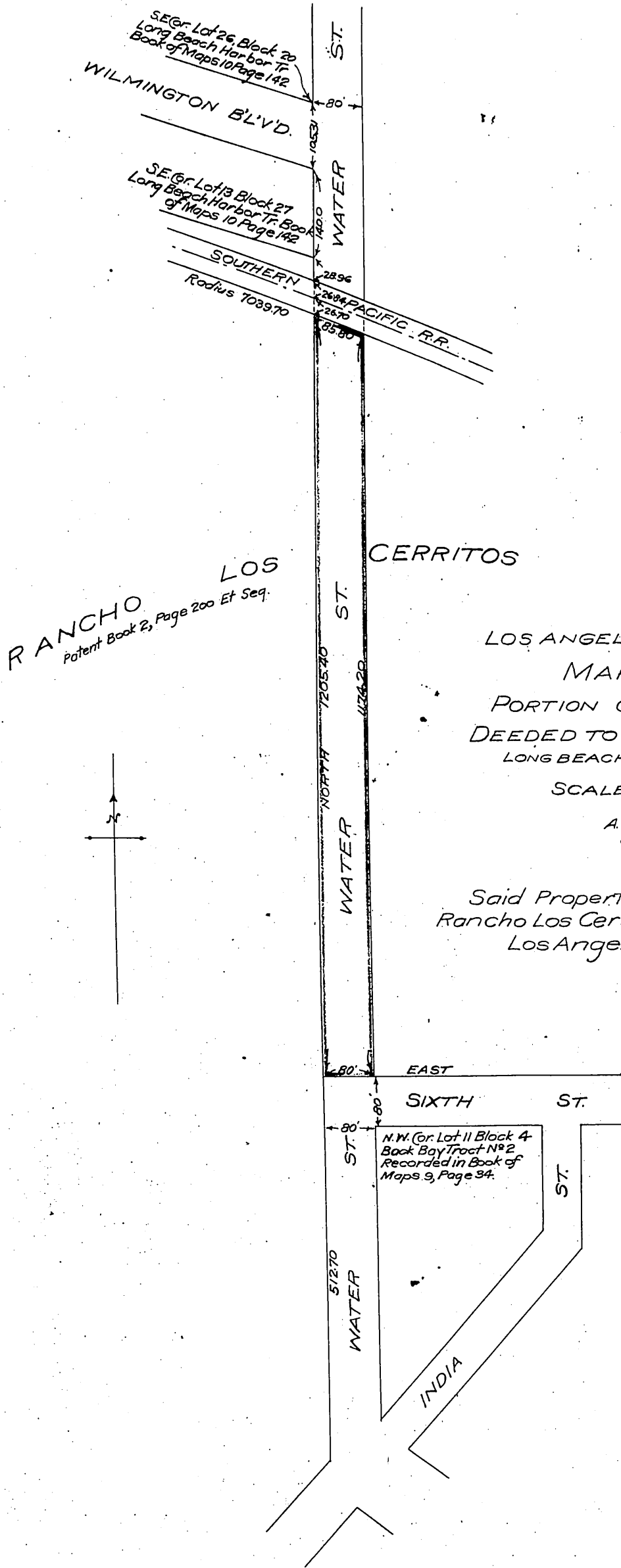


Los Angeles Dock and Terminal Co.
-to-
City of Long Beach

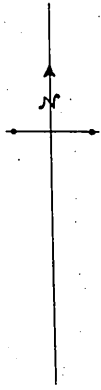


RANCHO LOS CERRITOS
Patent Book 2, Page 200 Et Seq.

LOS ANGELES DOCK & TERMINAL CO.
MAP SHOWING
PORTION OF WATER STREET
DEEDED TO CITY OF LONG BEACH
LONG BEACH, CAL., FEBRUARY 1910
SCALE - 1 INCH TO 200 FEET

A. L. SONDEREGGER
CHIEF ENGINEER

Said Property being a portion of the
Rancho Los Cerritos, in the City of Long Beach
Los Angeles County, California



See D: 9-125

A. L. S. G.