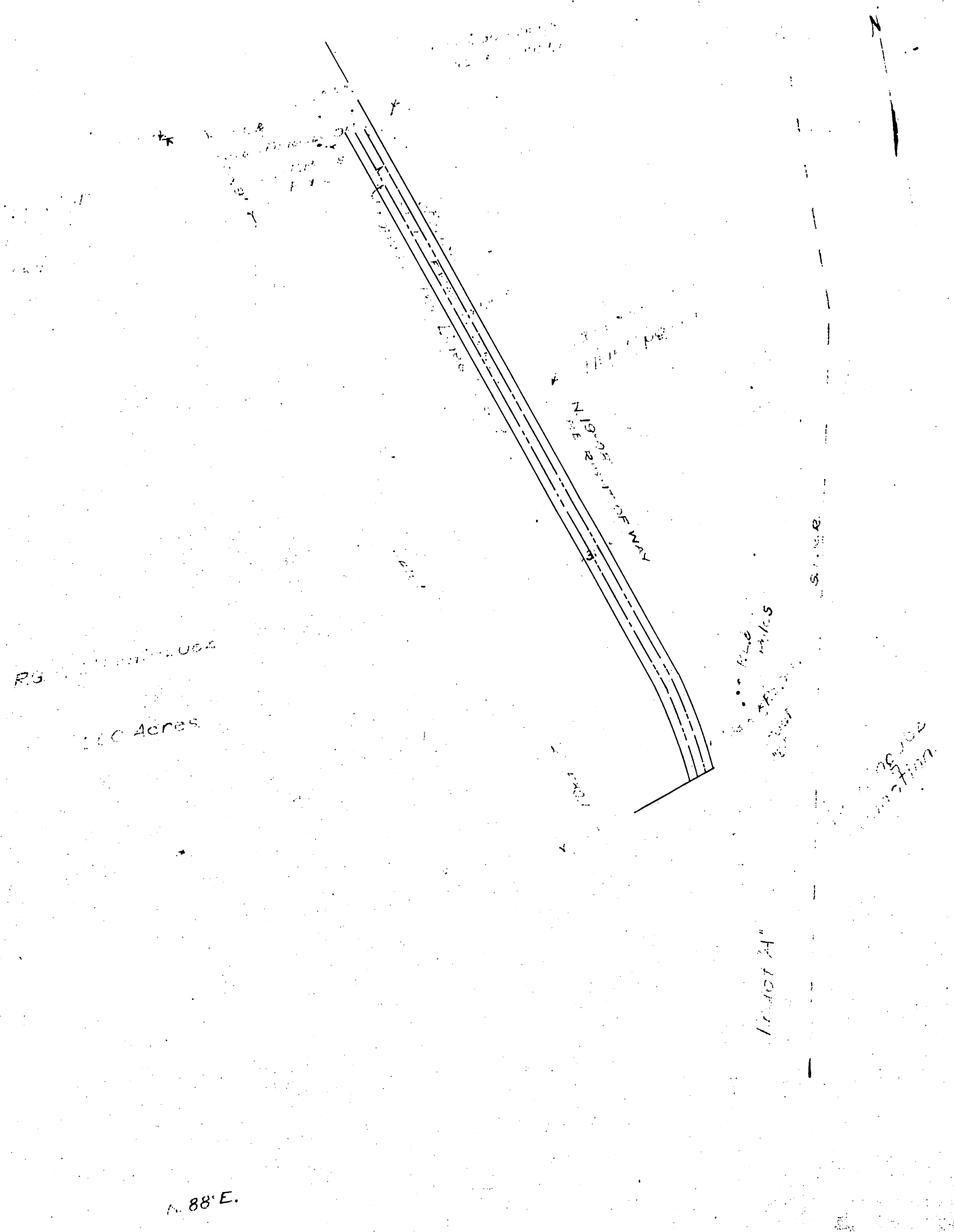


Victoria D. de Carson, Maria de Los Reyes D. de Francis,  
Guadalupe M. Dominguez, Susana D. Del Amo,  
to  
Pacific Light & Power Company.



R.B. ... 100 Acres

N. 88° E.

Recorders Note: Red lines  
and figures are data pencil  
lines and figures on original.

TITLE <u>Proposed High Voltage Line At Dominguez</u>	PACIFIC LIGHT & POWER CO LOS ANGELES, CAL.
SCALE <u>1" = 100'</u>	Line DEPT.
DATE <u>May 3, 1910</u>	DRWG NO <u>0133</u>
DRAWN BY <u>A</u>	

f. 95. ... & HT O.K.  
Recorded, Jun. 9, 1910  
See 1130 & 169