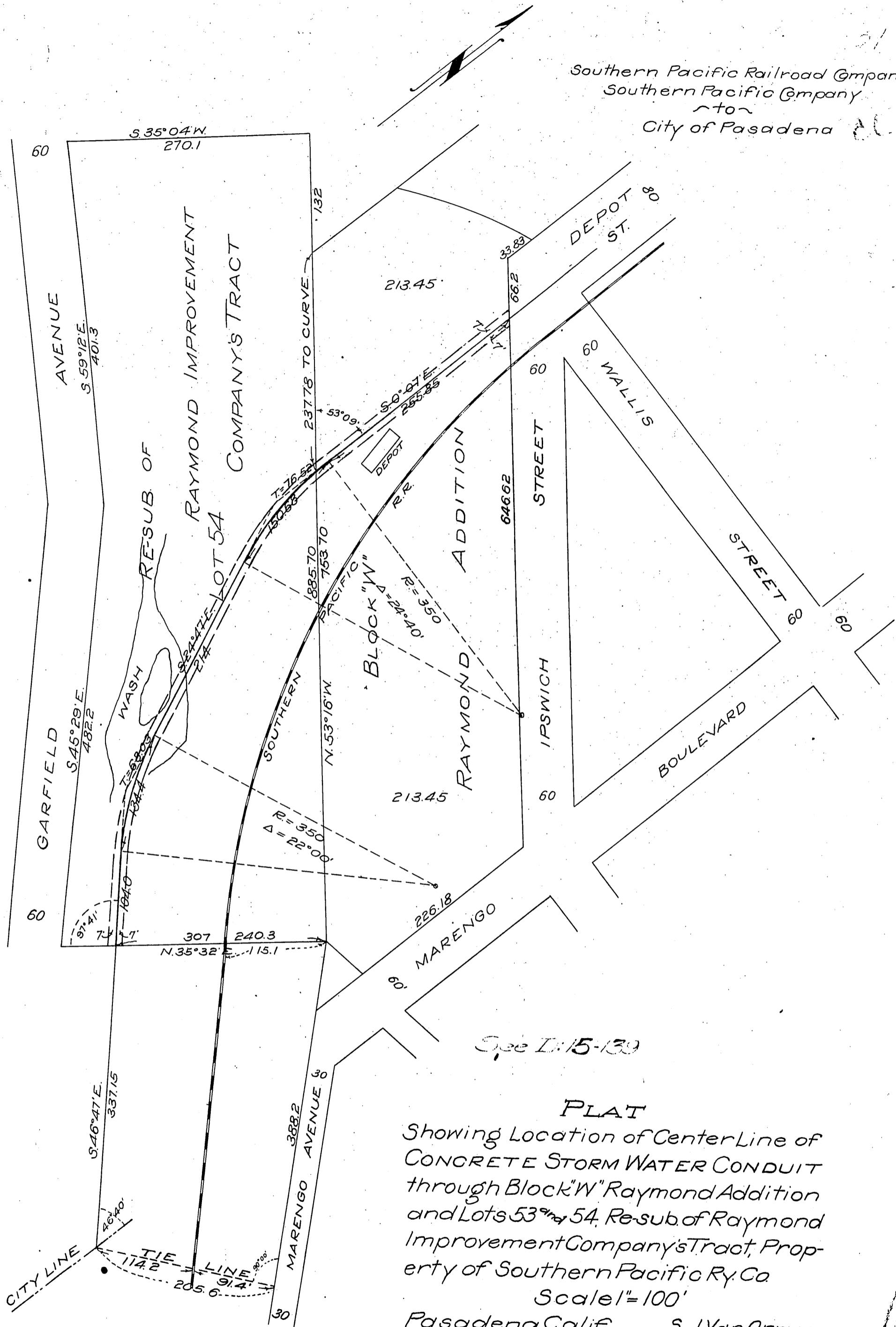


Southern Pacific Railroad Company
Southern Pacific Company
City of Pasadena



See I: 15-139

PLAT

Showing Location of Center Line of
CONCRETE STORM WATER CONDUIT
through Block "W" Raymond Addition
and Lots 53rd & 54. Re-sub. of Raymond
Improvement Company's Tract, Prop-
erty of Southern Pacific Ry. Co

Scale 1" = 100'

Pasadena, Calif. S. J. Van Ornum,
April, 1910 City Engr.

Int. 7.

Recorded May 31, 1910.

A. 5540

COMP. H.C.T.

D:4181