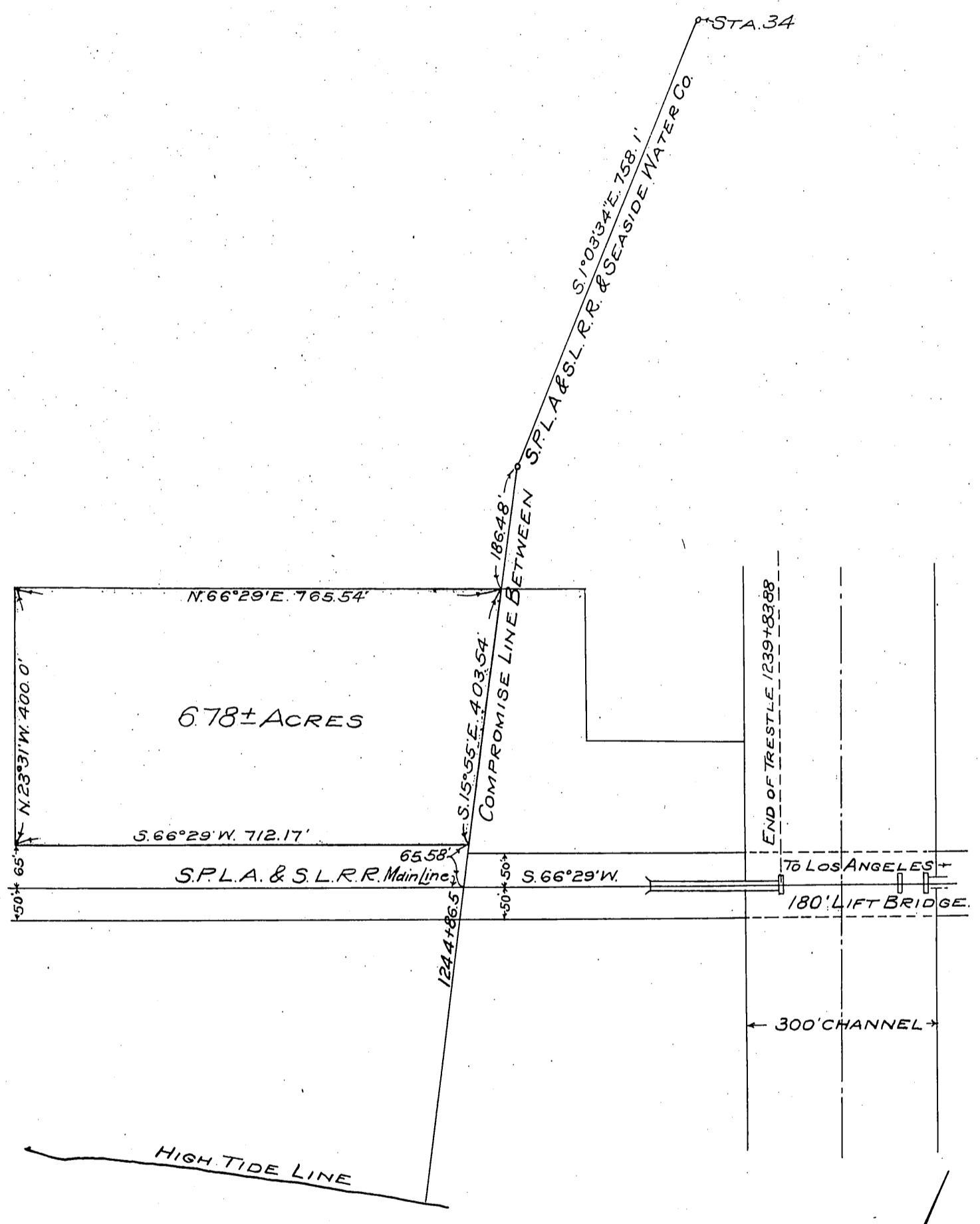


San Pedro, Los Angeles & Salt Lake Railroad Company  
Guaranty Trust Company of New York  
to  
Southern California Edison Company



"EXHIBIT A"  
 S.P.L.A. & S.L.R.R.  
 LOS ANGELES DIVISION  
 MAP OF LAND DEEDED TO THE  
 SOUTHERN CALIFORNIA EDISON CO.  
 OSTEND STATION  
 LONG BEACH, CAL.  
 Scale 1 in. = 200 Ft.

APPROVED APR. 4, 1910.

E. W. Jessup.

E.M.O.F.W.

8-V-517

Recorded July 13, 1910.

S. J. O. S.