

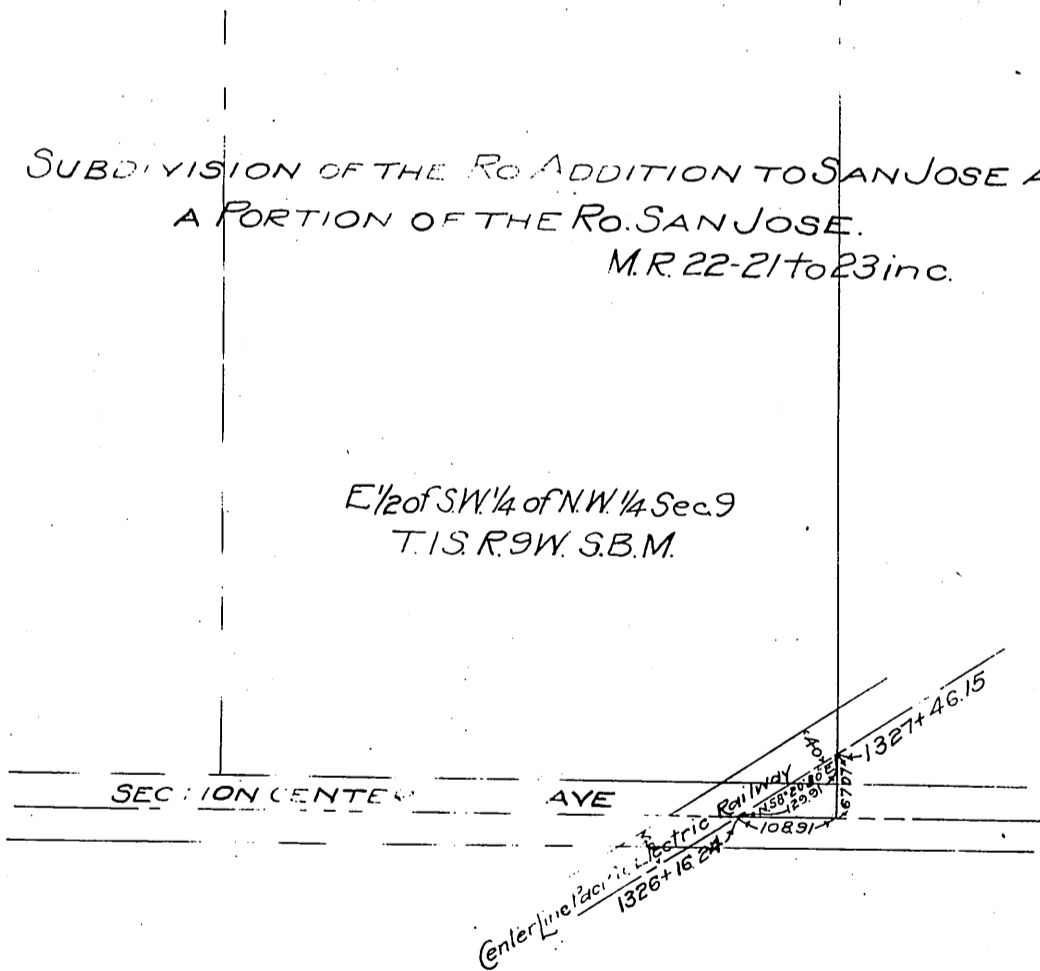
Albert Davenport, L.C. Stump
to
City of Houston



Scale 1 inch = 200 feet

SUBDIVISION OF THE R.O. ADDITION TO SAN JOSE AND
A PORTION OF THE R.O. SAN JOSE.
M.R. 22-21 to 23 inc.

E 1/2 of SW 1/4 of NW 1/4 Sec. 9
T. 1 S. R. 9 W. S. B. M.



Recorded July 26, 1910.

D:4205

Comp. H.C.T.

Eliton

Mar 31 1910