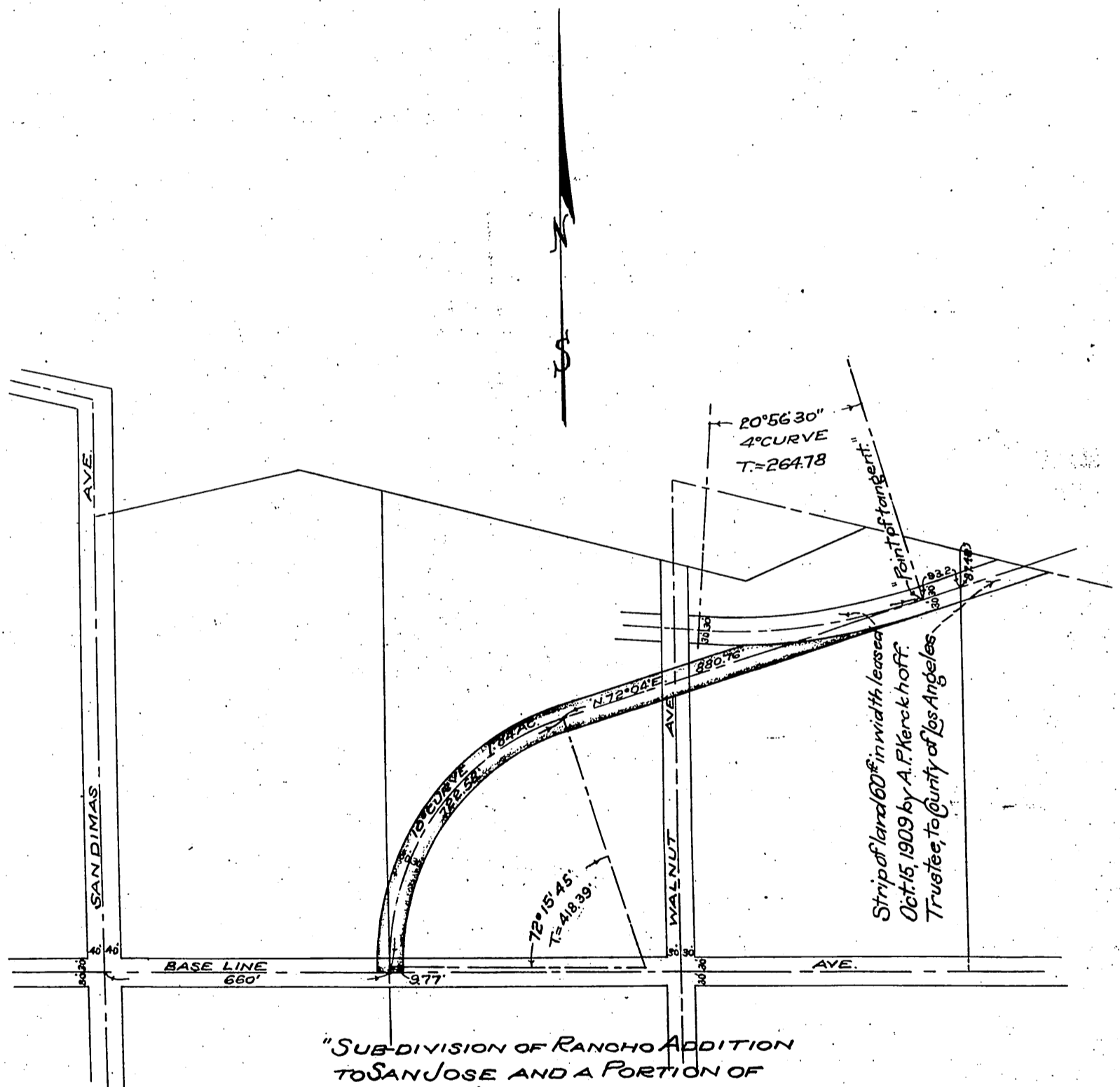


A.P. Kerckhoff, Frances P. Kerckhoff.
to
Pacific Electric Land Co.



"SUB-DIVISION OF RANCHO ADDITION
TO SAN JOSE AND A PORTION OF
THE RANCHO SAN JOSE"
M.R. 22 p. 21 ET SEQ.

Scale 1"=300'

Recorded, Aug. 29, 1910.

A 113

Smt. O.R.

Comp. H.C.T.

D:4222