

63

DM 4264-231
63

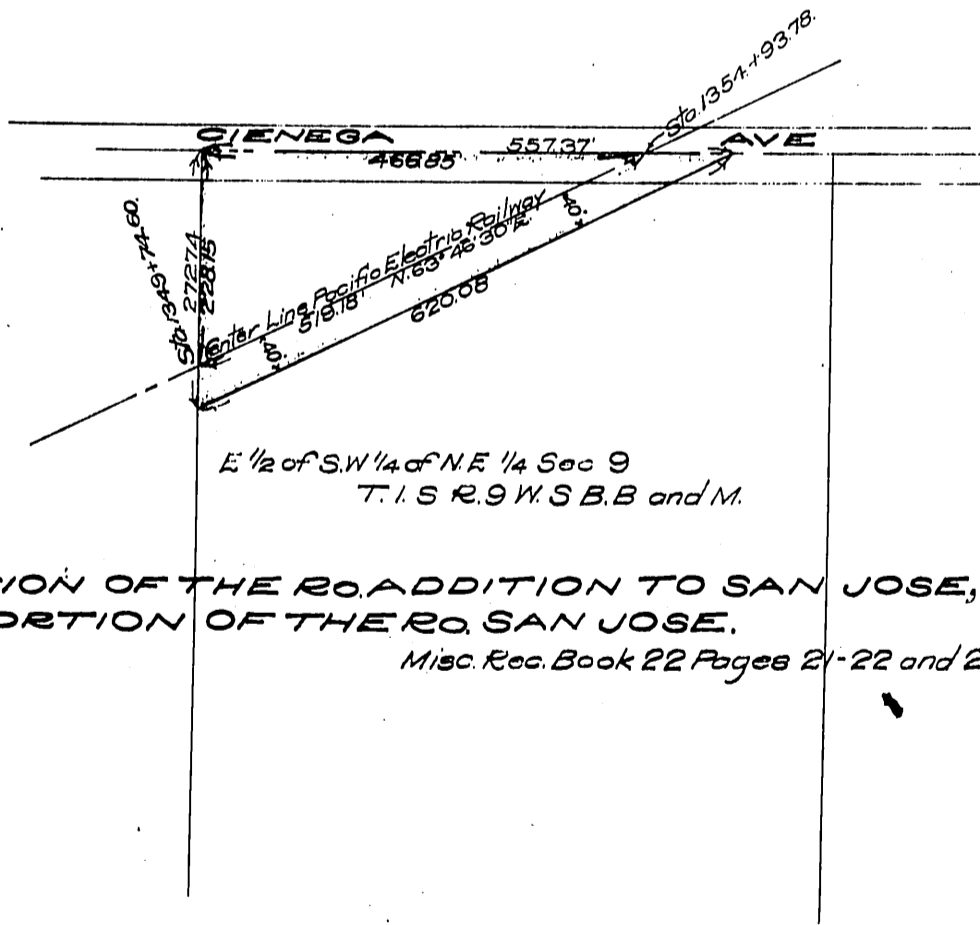
231

157

2113

John H. Bates -to- O.W. Hoke
M. Arabella Bates

Scale 1 inch = 200 feet



SUBDIVISION OF THE RO. ADDITION TO SAN JOSE, AND
A PORTION OF THE RO. SAN JOSE.
Misc. Rec. Book 22 Pages 21-22 and 23

H.G.T.