

Maria de Los Angeles Lopez de Reyes

66

to  
Oliver E. Roberts, Emma Roberts.

Oliver E. Roberts, Emma Roberts

to  
Antonia C. Horne

Antonia C. Horne, W. A. Horne

to  
John M. Millen.

PLAT OF SURVEY

OF

Ten ~~Three~~ Acres of Land in the ~~SE~~

~~Cor of the~~ S.W. 1/4 of the N.W. 1/4 of the S.W. 1/4 of

Sec. 2, T. 1 S., R. 14 W., S.B.M.

Showing reservations for roads.

10.0125 chs.

2x stake in monument

2x stake in monument

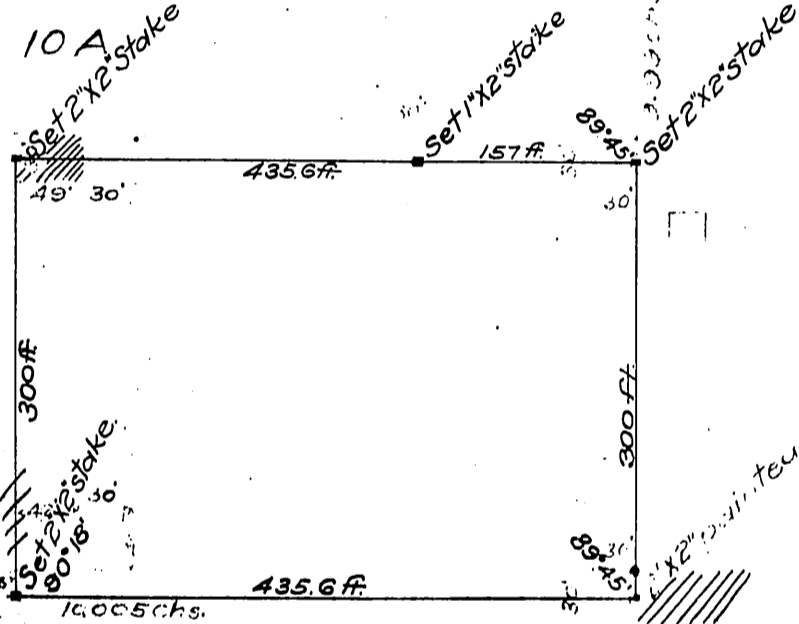
ROBERTS

10 A

100 Chs. Goldsworthy 18.7 North

1/2 stake in monument

WEYSE AVE.



NOTES

This color taken from records.  
 This color to tract boundaries, calculated distance.  
 This color = data of present survey, made for  
 O. E. Roberts May 6<sup>th</sup>, 1898. See page 38, book 4, Licensed  
 Surveyors plats, Los Angeles Co. Records.  
 W. H. Ensign - Surveyor.

Scale: 1 inch = 2 chains.

Recorded Aug. 11, 1910.

Set 40

See 1/31

Comp. H. C. T.